

A close-up photograph of a damselfly with iridescent blue-green wings and body, perched on a large green leaf. The background is a soft-focus green.

The Kingsclere Tower

What's On & Local News
MAY 2024

The Kingsclere Tower

EDITORIAL TEAM: Mike Stokoe, Stephen Steare, Steven Gaines, Cathy Williams
 ADVERTISING: Brian Elborn b.elborn345@btinternet.com tel 298704
 DISTRIBUTION: Brian Elborn tel 298704
 ASSEMBLY: Andrew Kitch tel 299743
 PRINTERS: Kingsclere Design and Print
 LAYOUT/COVER: Dragonfly by Kingsclere Stream (Cathy Williams)

Good News!

Our Bus service to Newbury and Basingstoke is being improved. From the 5 May the service, now numbered 32, will serve the village later into the evening. This extension of hours will be of great help to local residents. See page 14.

Mark Hirst, Chairman of the Kingsclere Cricket Club, writes most interestingly about the 250-year history of the Club and the visit of the most famous Victorian Cricketer on page 7. The details of the upcoming match to celebrate that anniversary are on page 15.

Finally, a big thank you to Lily K who has given us a younger perspective on nature in our Nature Notes column but has decided to “retire” after this month. Her comments on our environment have been very welcome and we wish her all the best in the future.

The Editor

Neither the Editors nor the Management Committee accept responsibility for the opinions expressed or the goods and services advertised in the Kingsclere Tower magazine. The Editors reserve the right to omit, amend, or condense any item submitted for publication.

To all “Tower” Contributors

**Copy for June 2024 to the Editor at: kingscleretower@gmail.com
 NOT LATER THAN 12th May 2024.**

If possible please submit articles as a MS Word document, A5 page size, font Times New Roman 11, single spacing. *If email not possible, post to:*
 23 Swan Street, Kingsclere, Newbury RG20 5PP.

**Will ALL contributors please include full name
 and contact phone number/email address.**

Kingsclere Parish Council

Chairman: Cllr Clive Mussett (07800 022432)

Email: clerk@kingsclere-pc.org.uk

Telephone: 01635 298634

Office: 37 George St, Kingsclere RG20 5NH



DOG FOULING – In particular, the Longcroft Road area has been reported again for this problem. Please do use the details in the April Tower edition and report offenders to stop this antisocial behavior.

NEW LOCAL BOBBIES are back in Basingstoke in a scheme to strengthen Community police relations. Each Bobby will have a specific area to control, with their name, email address and phone number publicly available, allowing them to be contacted by residents. The Bobbies will continuously be in touch with their communities, addressing the root causes of crime in their areas. **People should still call 111 or 999 in an emergency.** A total of 99 Bobbies are in place across Hampshire and the Isle of Wight and will be in post for a minimum of two years.

Kingsclere's Bobby is Simon Denton (23888) 07469 562503

As mentioned, this phone number is not for reporting a crime
simon.denton.23888@hampshire.police.uk

ANNUAL SPRING CLEAN – what an amazing number of volunteers turned up for the Village Spring Clean day on Easter Saturday – a record amount of litter was collected and KPC thanks everyone for their time and effort. It was a fantastic morning.

ANNUAL PARISH MEETING- held on 18th March, another excellent response to this event. There wasn't a spare chair left in the Club. KPC thanks everyone who gave reports, thanks also, to our Guest Speaker Prof Andy Kempe from Greenham Control Tower. Congratulations to our Cricket Club who are celebrating 250 years of cricket this year. Thanks to Ken Rhatigan who provided the catering for the evening.

GARDEN WASTE Collections Day - KPC understands some residents didn't receive a communication from BDBC about Garden Waste collection day altering to Mondays.

The D Day Anniversary Convoy will travel through the Village on Saturday 29th June at approximately 10.30am. It would be appreciated if parked vehicles could be moved off the Basingstoke Road and George Street for these 10/15 minutes. Thank you.



@kingsclerepc



facebook.com/KingsclereParishCouncil

The Parish website: www.kingsclere-pc.org.uk

GREEN WHEELY BINS & GLASS RECYCLING – the collections dates are Wednesday 1st, 15th and 29th May and 12th June.

NEXT PARISH COUNCIL MEETING – The next full Council Meeting will be on **Monday 20th May 2024**. The evening will be in two parts. At 7.30pm the Annual Meeting of the Council will take place and this will be followed by the Ordinary Full Council Meeting, in the Village Club. We welcome the attendance of all parishioners at our meetings and anyone who wishes to raise any matters will be given the opportunity to do so during Public Questions.

Basingstoke & Deane Borough Council



Energy Saving Home Improvements

Residents with a household income of up to £36,000 living in inefficient homes without gas boilers can apply for free energy-saving measures from the Warmer Homes Consortium, which Basingstoke and Deane Borough Council is part of. The funding is from the Home Upgrade Grant, to help people that own or rent a home without gas central heating to make their property more energy efficient. Improvements that can be fully funded by the grant include insulation, heat pumps, solar panels and heating controls.

While properties with gas boilers are not eligible for a grant, funding is available for people living in homes heated by storage heaters, an electric boiler, panel heaters, oil, coal, liquid petroleum gas or solid fuel.

More information about the Home Upgrade Grant, including how to apply, is at www.WarmerHomes.org.uk

Council's million-pound pledge for more electric vehicle chargers

The borough's first on-street electric vehicle chargers will be switched on in Basingstoke this spring as Basingstoke and Deane Borough Council begins driving forward its plan to spend over £1 million on new charging points across the borough in the next three years.

To make it easier for people without driveways to charge an electric vehicle near their home, the Borough Council is fully funding the first phase of a joint project with Hampshire County Council, which is responsible for on-street charging points, to create new chargers in residential areas across the Borough.

More information about the borough council's work to create new electric vehicle charging points is at www.basingstoke.gov.uk/vehicle-charging-point



Health Kiosk

A Health Kiosk has been installed at Overton Surgery. All patients with a current registration at Watership Down Health are welcome to use it.

The Health Kiosk is available from 08.00am in the morning to 6.20pm at night and is situated in the Waiting Room. The Health Kiosk will record a range of information including Height, Weight, Blood Pressure as well as a number of Health Questionnaires being included.

The Health Kiosk transfers any data directly into our clinical system so there is no need to hand in print outs of BPs etc as the data securely comes into our clinical system.

FeNO (fractional exhaled nitric oxide) & Asthma

WDH is very lucky to be able to offer FeNo testing for patients whom we are expecting may have asthma. FeNo stands for Fractional expired Nitric oxide. Nitric oxide is produced in the lungs when they are exposed to something that triggers an allergic reaction, such as pollens, house dust mite etc. This will only happen in patients who are susceptible. Your clinician will decide whether a FeNo test would be appropriate. FeNo testing is not suitable for everyone.

If you have been given an inhaler, you should not be using this on the day of the test. If you have had a chest infection which required antibiotics or have taken steroids in the last 4 weeks you would not be able to have this test as the results would be inaccurate for diagnosis.

Andover Minor Injuries Clinic

Opening hours

Appointments: 8:15am – 6:00pm Monday to Friday

Walk-in service: 8:15am – 4:00pm Monday to Friday (inc. bank holidays)

The Andover Minor Injuries clinic offers a walk-in service, however patients are strongly advised to call 111 to arrange an appointment, as appointments take priority over walk-ins.

Andover Minor Injuries Clinic **does not** see illnesses and ailments - please contact 111 or your GP.

Urgent and emergency cases will continue to be directed to the emergency department (A&E) in either Basingstoke or Winchester.



The Fieldgate Centre

Kingsclere Community Association
Your community, your place

The Fieldgate Centre is run by Kingsclere Community Association, as a charity (No 1168366). The association is made up of volunteers who rely on the support and participation of the community.

We are all hopeful that with Spring marching forward we can say goodbye to the excessively wet winter! The community centre continues to thrive, with private parties, fun events and coffee mornings, as well as the regular classes and events including Slimming World, Ceroc, Clubbercise, Pilates, Badminton, Songtree, Monthly Meet Up, Racing Welfare Coffee Mornings, Youth Club and HIIT class. Check our website for full details of the times of events and classes you may wish to attend.

May kicks off with **Polling Day on Thursday 2nd**. The centre will, as always, be used for the whole day.

Sunday 5th May gives everyone a chance to grab their dancing shoes and join in the **Ceroc Beginners Day**, taking place from **1.30pm to 4.30pm**. All levels welcome.

The **Library Quiz Night** takes place on **Saturday 11th May**. Brush up your trivia knowledge and come and join in the fun.

The **blood donors** continue to use the centre on a regular basis and will be here over the bank holiday weekend on **Sunday 26th May**. It might be a good opportunity for people who can't get here in the week to donate.

Looking way ahead, we have plans in place for a **D Day Celebration and Big Celebration Day on Saturday 29th June**. More information and details will follow on our website and social media.

Contact us if you need any further information about our activities or if you would like to hold your event at The Fieldgate Centre. Please visit our website or Facebook page for more information.

email: fieldgatecentre@outlook.com

telephone 01635 298497

www.thefieldgatecentre.co.uk

KINGSCLERE BOWLING CLUB OPEN EVENINGS COME AND GIVE IT A TRY

We are holding open evenings on every Thursday in May from 6.30pm onwards, absolutely **FREE**. Bowls and tuition will be provided. Everyone is welcome from ages 10 to 90+. We just ask that you wear flat soled shoes or trainers.

For more details visit www.kingsclerebowlingclub.co.uk

Kingsclere Cricket Club



2024 is a momentous year for cricket in Kingsclere.

On the 19th September 1774, The Reading Mercury and Oxford Gazette carried a very brief notice stating “On September 27th on Barton Down near Kentbury, Berks. Uffington v Kingsclere (Hants) for a Silver cup.” Quite what happened, who won the match or where the silver cup ended up remains a mystery. None the less, this is the first documented cricket match involving the village of Kingsclere.

The following year, the same newspaper carried reports of two matches between Kingsclere and Newbury. Kingsclere lost the first match but won the return fixture. The 24th July 1775 edition of the paper carried a report which read along the following lines:

SIR. The paragraph that appeared in your last paper reporting the victory of the Kingsclere team over the Newbury Cricket Club, was exceeding erroneous; the contest was by no means a fair one, as three picked men from places far distant were introduced by the former, unknown to the latter – and one of these strangers was a bowler who lay by till he saw one of his antagonists had got upwards of forty notches, and took the place of one of the Kingsclere bowlers (who was absolutely tired) and this gave the turn of the game. I am, Sir, A member of the Newbury Cricket Club.

And rolling forward roughly a hundred years, we come to a very notable moment in Kingsclere cricketing history. This was reported in the Newbury Weekly News on 25th September 1879. The article opens as follows: *Kingsclere. Cricket. – On Saturday last a match was played at Kingsclere, between Mr John Porter’s eleven and an eleven from Newbury. The following renowned cricketers, who were enjoying the hospitality of the owner of Park House, were included in his eleven, namely, Dr W G Grace, Messrs G F Grace, W R Gilbert and James Lillywhite.*

So the great Doctor, perhaps the world’s most famous cricketer of all time, played cricket in Kingsclere. Not only that, the records show that Grace had a very reasonable game scoring 35 runs, before getting out Hit Wicket, in the Porter’s eleven total of 191. After lunch “*supplied by Mrs Shervill of the Swan Inn*”, W G proceeded to take 9 Newbury wickets for only 12 runs, bowling them out for only 24 runs. Newbury didn’t fare much better in their second innings scoring 63 runs with Grace taking a further 5 wickets.

So there’s a historical relationship between Park House Stables and cricket which we’ll return to later. Roll forwards to 1973 and the cricket club was preparing to celebrate its one hundredth anniversary when it asked the late, great John Arlott, the voice of cricket on the BBC’s Test Match Special programme, to write a foreword to the match day programme.

We have Arlott’s intervention to thank for digging into the records and alerting us to the 1774 game against Uffington – and pointing out that, far from celebrating 100 years we should actually be celebrating 200 years in 1974. A game against an MCC eleven did take place in 1973 and we celebrated 200 years in 1974 with a game against a Hampshire County Cricket Club Chairman’s eleven.

So this year we celebrate 250 years of Cricket in Kingsclere. What a momentous occasion. A quarter of a millennium.

As was mentioned earlier, there is a historical link between Park House stables and the cricket club which has grown over the last few years. We now play our Saturday league cricket matches at the Fieldgate Centre and our evening league matches at Park House Stables. Quoting again from the article in the Newbury Weekly News from 1879.

“The hills and downs on one side, and the woodlands and cornfields on the other, presented a charming view from the ground. A large and fashionable company were present to witness the contest, and, though so late in the season, a number of ladies bravely assembled and graced the field with their presence”.

What a great picture that paints of the fabulous landscape that our village sits in and of the unique cricket ground that we now have the opportunity to play cricket matches on.

...continued on page 15 with info on Kingsclere CC v Park House Stables

Mark Hirst. Chairman, Kingsclere Cricket Club



W G Grace



Kingsclere Cricket Club c. 1900

Kingsclere Rugby Football Club



Women's Walking Rugby - The club held its first walking rugby game for women from 18 up to 70 + on Thursday 3rd April. It was a success and all those who participated enjoyed playing. The sessions will be **Thursday evenings** at The Fieldgate Centre between 7.00-8.00pm. Walking Rugby is a very easy game to learn, no experience of rugby is needed and can be played with just 4 a side. It's a great way to exercise, walking as fast or as slow as your body allows with low impact on all your joints, you don't need to be fit to play. The main aim is to enjoy yourself, make some new friends & get a little bit of exercise at the same time.

For more information, please contact:

Joanna Reed – Moreton **Secretary-Kingsclererc@outlook.com** or

Geoff Curtis **Youth-coach-Kingsclererc@outlook.com**

The adults' team played its last leagues match of the season in a close fought game at home against Farnborough 4th's, winning 33 -29. Both teams scored 5 tries. The man of the match was Tom Green.

Charity 10's Tournament - On **Saturday 11th May** the Club will be running a Charity 10 a side tournament at the Fieldgate Centre to raise money for St Michael's Hospice in memory of our former player and captain Stevie Damiral. The event will start at 11.30am and finish at 4.00pm. Please come along and support this worthy cause.

Summer Touch - The Club will start its summer touch rugby on **Wednesday 29th May** at the Fieldgate Centre between 7.00-8.30pm. This is open for everyone from 16 years old and upwards. Touch rugby is just like walking rugby, is an easy game to learn, no experience of rugby is needed and is a great way to exercise and get fit. Come along and enjoy yourself.

To find out more information about the club please visit our Facebook and Instagram pages.

Dilwyn Patterson

North Wessex Downs Walking Festival 2024
31st May – 9th June



**North Wessex
Downs
National
Landscape**

The festival provides the perfect way to get out into the countryside with a varied programme of 29 events. These include opportunities to visit farms, seek out wildlife, discover history, picnic with the family, take part in a self-guided sponsored walk, or simply soak up the views from the top of the downs. Many of the walks are free. All the walk guides are knowledgeable and welcoming and will bring alive some of their favourite places.

Full programme details and booking information are on the website at:
northwessexdowns.org.uk/walkingfestival

Kingsclere Community Library



HOURS Tuesday & Thursday 1.00pm - 5.30pm
Saturday 10.00am - 1.00pm

Let's Get Quizzical!

Kingsclere Community Library is running their "Let's Get Quizzical" Quiz Night on **Saturday 11th May 2024** at the Fieldgate Centre at 7.30pm (doors open at 7.00pm). Tickets £7.00 (to include snacks) on sale in the Library (cash/cheque only) during opening hours or for BACS payments by contacting **Lucinda on 07989 585414** or at **lucinda.thursfield@outlook.com**. Teams of up to a **maximum 8 people**. Couples or smaller teams also more than welcome. There is also a raffle with some great prizes – don't miss out, tickets selling fast!

Wessex and Hardy

Newbury Dramatic Society will be presenting "Wessex and Hardy, On the Cusp of Change" on **Tuesday 28th May** in the Kingsclere Community Library at 7.30pm. – tickets £7.00 (to include glass of wine or soft drink) available in the library during opening hours and also from Eventbrite.

The Bunnies

The library is delighted to welcome The Bunnies back to their usual monthly slot, introducing babies and toddlers to the joys of reading, which will hopefully continue throughout their lives!

Nicki Lee, kingsclerelibrary@gmail.com www.kingsclerelibrary.co.uk
Library phone number: 01635 297464

Girl Guides



Congratulations to Eleanor Read who recently received her Queen's Guide Award, the highest award given to Girl Guides.

I was asked recently if I knew of any other Queen's Guides from Kingsclere. I have managed to get the names of a few but I am sure there are several more. If you are or know someone from Kingsclere who is/was a Queen's Guide please get in touch.

Maybe we could get all the Queen's Guides together for a celebration?

Margaret Peach, Ex-District Commissioner, Girlguiding Kingsclere
Tel: **07857 616790** email: **margaretpeach55@gmail.com**

Kingsclere Gardening Association



KGA Member Open Garden Wednesday 8th May 7pm

This is a brand-new event for all KGA members. The date of our first KGA, members only, Open Garden event is at Star Farm, Wed 8 May 7pm. The gardens are owned by Sheila & Martin Openshaw, their house is the first turning directly after The Star Inn on the A339 towards Newbury. There will be plenty of parking. If you would like to join this event, please contact our Event's Secretary:

Sylvia Pennington **01635 298880** Sylviapennington@btinternet.com

KGA & FOSM Plant Sale Saturday 25th May

9.30am–12 noon St Mary's Churchyard

We will really appreciate any plant donations. Please sow a few more seeds or think of the sale if you are splitting up plants. We are happy to collect plants before the sale and will be taking donations at the Kingsmill Room the Friday evening before the sale. We usually open the room between 6-7pm, but I will confirm this time nearer the date. Plants can also be donated on the day. We will have a plant donation table ready and waiting. If you know anybody who would like to join or renew, we will have membership packs available. The Kingsmill room will be open during the event for refreshments and cakes. If you would like to volunteer to help at the event, please get in touch.



41st Spring Bulb and Flower Show – Report

This show took place on Sunday 7th April and was a great success. We had a huge entry of “Club Bulbs”. These are chosen by John Eckton in the Autumn and offered for sale to Members at cost price to pot up and overwinter for entry into the Spring Show the following year. This has to be the best year we have ever seen, well done to all those members who entered this class, the scent from the flowers was magnificent.

As well as some amazing specimen daffodil blooms, there were some unusual orchids to see this year too with a magnificent *Paphiopedilum rothschildianum* on the bench.

Beth Theobald (Secretary) 07916 032250.

Facebook: Kingsclere Gardening Association. Please join our FB group

The Church Pages



Hi,

Spring is here, the weather has turned warmer, the days longer, and everything in the garden is growing like crazy!

It's traditional at this time of year to indulge in the ritual of the “spring clean”. We give our homes a thorough clean – moving furniture to vacuum spots normally out of sight, emptying cupboards to throw away that can of soup that was best before July 2018, and even going through our wardrobes to get rid of those green trousers that haven't been worn once in the 21st Century! We do accumulate lots of stuff, don't we? Sheds, garages, lofts, spare rooms full of it!

There's a story in the bible where a rich man asks Jesus what he needs to do to have eternal life. Jesus tells him to sell everything he has and give it to the poor, which he just can't bring himself to do. Jesus concludes, “it is easier for a camel to go through the eye of a needle than for someone who is rich to enter the kingdom of God.” Jesus also says that no one can serve two masters – God and money - you will either hate the one and love the other, or you will be devoted to the one and despise the other.

The issue isn't wealth itself; the issue is what competes for our hearts' attention. Having money, or possessions, is not a problem – but *loving* having those things can be if we grip onto them too tightly. Before Jesus began His earthly ministry, John The Baptist challenged those coming forward for baptism with the wrong motives, telling them they needed a change of heart to be fruitful in life. He told them that “anyone who has two shirts should share with the one who has none, and anyone who has food should do the same”.

What John is saying here is the antidote to our over-accumulation of stuff – he is saying that our over-stuffed larder or wardrobe should be shared. This isn't intended to be a guilt trip – I'm writing as much to myself as anyone – but I hope this has made you think about how “fruitful” you could be.

So, I'd like to encourage you to have a spring clean. Take a long look at all the stuff you've accumulated, and ask whether you need it, and whether you're prepared to let go of it. There are many deserving charities that will gladly recycle your stuff for you, and you can donate food items to the St. Mary's Community Larder each week.

Fruit that is accumulated eventually rots. Fruit that is distributed brings life and happiness. I know which I'd rather be doing.

Bless you,

Pete

Rev. Pete Williams

St Mary's Church

Worship in our Churches



May 2024

9.30am

10.30am

Thur 2nd		Morning Worship St Mary's, Kingsclere
Sun 5th	Communion St Peter's, Headley	Communion St Mary's, Kingsclere
Thur 9th		Communion for Ascension Day St Mary's, Kingsclere
Sun 12th	Morning Worship St Peter's, Headley	Morning Worship St Mary's, Kingsclere
Thur 16th		Morning Worship St Mary's, Kingsclere
Sun 19th	Morning Worship St Paul's, Ashford Hill	Morning Worship St Mary's, Kingsclere
Thur 23rd		Morning Worship St Mary's, Kingsclere
Sun 26th	Communion St Paul's, Ashford Hill	Morning Worship St Mary's, Kingsclere
Thur 30th		Morning Worship St Mary's, Kingsclere

www.stmaryskingsclere.co.uk

Kingsclere Methodist Church

Services for May 2024

Sun 5th	Mrs Judith Cole
Sun 12th	Mrs Helen Watson
Sun 19th	Worship Leaders
Sun 26th	Mrs Rosie Greenhalgh

All services begin at 10 am

Coffee Morning every Thursday 10.30 until 12noon

Hall available for hire (see back cover of this magazine)

Christine Westcombe email c_westcombe@hotmail.com

Lighting up St Mary's

The sight of St Mary's Church when it is floodlit is truly beautiful. Many people sponsor these lights (£15 per evening) to celebrate an occasion, such as a birthday, wedding, anniversary, christening, or some other special day in their lives. To book, contact Emma, our Church Administrator. email: administrator@stmaryskingsclere.co.uk tel: **07422 687125**



April

13th For Paulo on his birthday. Dearly loved and missed by all x x

15th For Ann on what would have been her 64th birthday, Love Roger xx

May

4th Loving memories of Moira on her birthday.

31st Remembering Hazel Soper, a dear Mum, Grandma and Great Grandma on her birthday.

Saturday Coffee

Fresh brewed coffee, tea and delicious home-made cakes.
All welcome – please do pop in!

10.00-12.00

in the Kingsmill Room, St Mary's Church

May 4th, 11th and 25th

Volunteers welcome – if you're able to pour coffee, welcome people or make cakes occasionally please do contact the church office on:

01635 299528



FOSM 200 Club

The winner of the March Draw was Heath Denness – No.83

Congratulations, Heath

Next month's Draw will take place at Bel & the Dragon at about 7pm on

Thursday 9th May

200clubkingsclere@gmail.com

Friends of St Mary's Kingsclere Ltd

Following our sold out and highly enjoyable **USA Staycation** in mid-April, we are now very busy preparing for the **Annual Plant Sale with Kingsclere Gardening Association**, in **St Mary's Churchyard on the morning of Saturday 25th May**.

This always popular event heralds the start of early Summer and is an ideal opportunity to stock up with new plants. As always, we hope to offer a wide range of perennial and some annual flowering plants for sale, as well as a good selection of sturdy young vegetable plants.

If any of you are splitting perennials or will have spare young plants grown from seed, please do bear us in mind, and get in touch with either Jane Royle on 01635 297430 or Beth Theobald on 07916032250 to discuss collection or delivery. We look forward to seeing you there!

Peter Turner, Chairman

Website: friendsofstmaryskingsclere.org

For membership and other enquiries contact: fosmkingsclere@gmail.com

BIG EVENT

Sunday, 30th June, 10am-12:30pm
The Fieldgate Centre



Our next event is a car boot/table top sale – check our website for details!

Plus:

Repair Cafe – register your repair on our website.

Fight Fast Fashion! Free clothing 'swap' – kids and adults.

Recycling (no medicine blister packs accepted sadly)

Cafe – coffee, tea, cakes!

Volunteers always needed – please contact us.

Information about living more sustainably is on our website.

Nicki, Sarah, Lucinda & Sue greenerkingsclere@gmail.com

www.Greener-kingsclere.co.uk

Improved timetable: Basingstoke Newbury Bus Service

In partnership with West Berkshire Council, from 5 May 2024, Stagecoach buses between Newbury, Kingsclere and Basingstoke will run later into the evening, on Sundays and more frequently at weekday peak times. This is now service 32 (previously Link). See Stagecoach website for improved timetable:

https://ticon-maps-stagecoachbus.s3.amazonaws.com/Timetables/South/Basingstoke/5th%20May%202024/Basingstoke%2032_05-05-24.pdf

Continued from page 7 ... **Kingsclere Cricket Club**



250th Anniversary Cricket Match

Thanks to the generosity of Andrew and Annalisa Balding, the plan is to play a limited overs cricket match on **Sunday 25th August 2024**. The match will be between a Kingsclere Cricket Club eleven and a Park House Stables invitation eleven. We're expecting Andrew's little black book to produce some star names in due course! So far, we know that one of the Southern Vipers (the Hampshire and Sussex Ladies' Hundred team) and a member of the Hampshire County Men's squad will be playing. And to top that we have former England Test and one day player, Matthew Hoggard making a star appearance.

In addition to the cricket there will be a parade of Kingsclere trained horses and the opportunity to watch the horses performing on the gallops. Afterwards there will be a live band to keep the atmosphere going into the evening. There will be a beer tent, food stalls, an ice cream pavilion and a bouncy castle to keep younger members entertained.

The event will be raising funds for the cricket club and make a number of charitable donations to good causes like the Lords Taverners, the Air Ambulance and St Michael's Hospice.

There's still a large amount of planning to do, but I hope that has whetted your appetite to come and join us to recognise this momentous cricketing year. Visit www.kingsclerecricket1774.com for more details and how to buy tickets!



KINGSCLERE
CANCER RESEARCH FUNDRAISER



The KCRF Wall of Hope:

Honouring all those taken by and living with cancer

We invite you to add a name to the Wall of Hope, proudly displayed at the Kingsclere Cancer Research Ball on 6th September 2024 at Oakley Hall Hotel. The Wall of Hope is a huge display to honour all those taken by and living with cancer.

Email the name(s) you want displayed to admin@kingsclerecrf.org.uk, call Sean on **07787 527326**, or add names(s) directly to our donation page: <https://fundraise.cancerresearchuk.org/page/kingsclere-vs-cancer> (QR code above). Suggested minimum donation £5.

Tickets for the event are still available, plus we are seeking event sponsors and prizes for our Silent Auction: <http://kingsclerecrf.org.uk/>. All proceeds go to Cancer Research UK.

Thank you so much for your support.

Beccy, Claire, Mandy and Sean



KINGSCLERE VILLAGE CLUB

Est. 1921 CHARITY 1189234

<http://www.kingsclerevillageclub.co.uk>

<https://www.facebook.com/kingsclerevillageclub>

Community Café



Please note this month's Café is on **Saturday 18th, 10am-12pm**, with a fun quiz at 11 o'clock. The craft table for younger visitors will feature handprint butterflies and paper flowers. All welcome to enjoy homemade cake, a cuppa and a friendly chat.

D-Day

The D-Day convoy will be passing the Club on

29th June, at approximately 10.30am. As part of our contribution to the day, we would like to put on a WW2 themed exhibition. If you have anything that you would be willing to lend us, please get in touch with Helen, below. The Café will be open for refreshments, and chairs placed outside for those who cannot stand, to watch.



Shakespeare in the Garden

The Festival Players will perform the Tempest on the evening of **Wednesday 21st August.** *'A triumphant compilation of intrigue, magic, and humour'*

Performance starts at 7.30pm, picnics served at 6.30pm.

Tickets £15 performance only, £22.50 performance & picnic.

From www.wegotickets.com/event/617599 or Helen (below).

Vegetarian option available. Please let us know if you have any allergies or other dietary requirements.

Thanks

Thank you to those who have contributed to our floor appeal at <https://www.justgiving.com/campaign/newfloor> or by direct contribution.

There is a pause at the moment to assess if the interventions so far are having an effect.

Helen 297390 or events@kingsclerevillageclub.co.uk

Wolverton Market

The next Market is on **Saturday 4th May in the Village Hall** from 9.30am until 11am. All the usual stalls will be available to browse and there will be lovely fresh eggs for sale as well some home grown produce and bedding plants. Coffee, tea and biscuits are available to purchase and there is parking outside the hall.

We look forward to seeing you.

Wendy Morgan 01635 297538

What's on in May at Shipinnarts

The Ship Inn Country Hotel, Ashford Hill, RG19 8BD

Tel: **01189 814504** Website: <https://shipinnarts.org/>



May 3rd Friday Open Mic 7pm FREE – why not pop in for a drink if you are passing, or come and join in – bar is open

May 14th Tuesday Crafts at Shipinnarts 11am – 2pm – please bring £5 cash on the day

May 18th Saturday 7pm – 9pm “Cabaret and Cocktails”

– with Kitty Mazinsky (<https://www.kittymazinsky.co.uk/>)

Dress: Black Tie and Evening Dress (optional). Cocktails available at the bar.

£10 ticket Eventbrite/The Ship 01189 814504 please bring cash on the door.

Thank you

Kingsclere & Headley Woodlands W.I.

Kingsclere Village Club, 35 George Street



We have had some excellent speakers so far this year including in April, when, in a change of speaker, we had John Hughes telling us 'Where have all the birds gone?' John was really good and we were lucky to have such a speaker at very short notice. Very much enjoyed by all the members.

In May we have our Annual meeting when we review our year, confirm our committee for 2024/25 and elect the president for the coming WI year, ready to begin our new WI year with a fresh selection of speakers.

Our meeting is on **Wednesday, 8th May**, commencing at 1.45pm in the Village Club, 35 George Street. We will have in attendance two WI members from Burghclere to act as tellers and conduct the election of the president and answer any questions members may have about the direction in which the WI is moving in order to get away from the “Jam and Jerusalem” image. Our members like nothing more than having a cup of tea, cake and a chat with friends, plus the bonus of an eclectic mix of speakers. Do come along and see for yourselves that we are a friendly bunch and welcome everyone who comes through the door.

Margaret Geary, President tel 01635 297197

Correction to Advertisement for **M.O.L. Photography Studio** (Page R)

The correct email address is: markmolphoto@outlook.com

Kingsclere CE Primary School



We ended the Spring Term with an Easter performance at St. Mary's church which was enjoyed by many. The whole school performed a cantata called 'Easter Children' by Sheila Wilson. The children performed and celebrated the Easter story with confidence and enthusiasm.

We continue to actively engage in sporting events for the children. We took a coach of 59 pupils to participate in the West Berkshire and North Hants Primary Schools Cross Country Championships at Newbury Showground. There were four races in total for each year group and in each race, there were approximately 400 participants. Each Kingsclere CE Primary School competitor completed the cross-country course, and all performed well. A special "well done" to Flo who came 34th in the Year 3 and 4 girls, Euan who came 50th in the Year 3 and 4 boys' race and James who came 105th in the Year 5 and 6 boys' race. Not a single child was put off by the mud or rain either. Well done Kingsclere!

The whole school dressed up in red to support Comic Relief on Friday 15th March. Thank you to all who donated to this good cause.

Our parent/carer evening took place at the end of March during which we asked parents and carers to complete a survey about the school. 121 parents/carers completed the survey and 99% said they would recommend the school to another parent/carer. We are really proud of this result and continue to see many new children join the school including a full cohort of children in Year R for September 2024 which is wonderful news!

At the end of term, I was extremely honoured to be offered the Headteacher position at Kingsclere CE Primary School. I look forward to continuing to support the children, their families and staff, governors and the local community to give every child the best possible educational experience. Kingsclere CE Primary School is a wonderful school with a great staff team who work tirelessly to give their all to enable each child to achieve their full potential.

We are looking forward to the summer term and the many outdoor events including Sports Day, our Swimming Gala, the Year 5 and 6 residential and our PTA School Campout. Fingers crossed that the sun shines for us on these days!

Jo Messenger, Headteacher

Kingsclere Village Bunnies Baby & Toddler Group

Where: The Village Club, George St

When: Tuesdays, 9:00am – 11:00am

Cost: £2.50 for 1st child (including snack for child and hot drink and biscuit for adult), 50p per extra child, £1 per extra adult



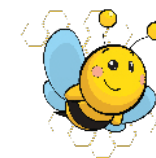
We had an amazing time at our fun-packed Easter party! With an egg hunt and Easter-themed crafts, there was plenty to keep the Bunnies entertained. As we head further into spring, we are looking forward to welcoming older siblings along during May-half term.

The library will also be open once again on Tuesday May 7th, during usual Bunnies' hours – do come and join us for this session and choose some new stories!

We are a very friendly selection of mums, dads, grandparents, and child minders with children, from tiny babies to energetic toddlers and we love welcoming new visitors to our play sessions. We enjoy both indoor and outdoor play, with a craft table, plenty of toys and singing time too. Thank you as always to Swan Street Stores for their continued support of a weekly donation of fresh fruit snacks for the bunnies. For information visit our Facebook page, or regular visitors can join our WhatsApp group for weekly updates.

Tess Watkins 07905 624679

Kingsclere Pre-School



The weather throughout the Spring Term was decidedly "un-Springy" with so much wind and rain, but the children have been hard at work and play, and still getting outside as much as possible. They produced some lovely craft activities for Mother's Day and Easter, and are looking forward to getting creative for Father's Day too. Hopefully with better weather to come in the summer term, the children will be able to enjoy the outside area more and we can begin our plant growing and garden maintenance.

As ever, we are busy fundraising and recruiting new committee members. Please see [kingsclerepreschool.square.site](https://www.kingsclerepreschool.square.site) for ways to support us.

Kingsclere Preschool is currently full, but we are accepting applications for September 2024. Please contact admin@kingsclerepreschool.co.uk, or visit our website www.kingsclerepreschool.co.uk for more information.

May in the Garden

May is a wonderful time in the garden, we have enjoyed the mostly yellows and whites of the Spring flowers. This month the colours explode, with the irises, clematis, lilac, alstrantias, alliums, late tulips, camasses and rhododendrons.

There will be some pruning to be done now, the Winter and Spring flowering shrubs will need a good cut, unless you require them to grow large and many of them will if left unattended. Cut back hardy fuchsias as the new growth appears from the ground. It has been very difficult to get some of the jobs done because of the rain, but hopefully that will change and we will be able to catch up.

If you are fortunate to have the space to make compost, either in a bin or heap, make sure that seed heads are removed before adding discarded plants. Use a good mixture of raw vegetable waste, spent compost, grass cuttings, leaves, and some people will add paper and cardboard. Make sure all the waste is cut into small pieces, this will need to be turned regularly and covered to help the heat. To rot it all down it probably needs to be left to work for about a year. Gardening is about patience.

Time to harden off the vegetable plants before adding to vegetable patch i.e. cabbages and leeks. Sow chard, spinach, French and runner beans, sprouting broccoli, peas, salad leaves, and sweet corn.

Lawns will be growing rapidly and will need to be cut twice a week. Because of the amount of growth, they will need feeding. Moss has been a huge problem this year, with the constant rain, but hopefully we will be able to rake some of it out of the lawns. The birds have been very helpful as they have been taking some of our moss to build their nests and probably have found lots of insects and grubs underneath. As we have had so little frost there are a lot of slugs and snails everywhere. I read, recently, mixing spices with water and using it around plants will discourage them. I have not tried it, but might have a go.

May is when I give many of our perennials the Chelsea chop. Chelsea is reference to the show. This gives us a date to get the job done. The plants that I give the chop to will flower a little later, but the benefits are that the plants stay tidy and bushier. They can be cut back halfway or close to the ground, I prefer halfway, sedums and astors benefit from this treatment.

Tie in climbers, sow biennials, stake and support perennials. Remove any weed from ponds, dead head spring bulbs, remove strawberry runners, hoe regularly and keep pots and baskets watered to prevent the vine weevil. If we are unfortunate to have late frost, do try and cover up as much as possible as some plants will not recover.

Denise Allen

Nature Notes

It's finally getting warmer! I have been able to go outside and play with my sister and I have been helping mum in the garden. We have been tidying up all the sticks and broken things from the winter and I have been planting lots of seeds that will hopefully turn into food in the summer. I planted some sugar snap peas about a week ago but when I went to look at them the next day, the mud had been dug up and the peas were gone! Mum says it must have been a mouse. I've planted some more and hidden them in the greenhouse so hopefully the mouse won't get to them now. While in the garden I have seen so many bugs, larvae, caterpillars and even a few butterflies floating around. It always makes me smile when I see them warming up their wings on our path.



Early butterfly:

Orange Tip feeding on forget-me-not

A couple of weeks ago me and my mum went across the A339 and walked along some of the Brenda Park Way walk. It's one of my favourite places to walk as there is a stream that we throw small sticks in and race them to a tree. There are lovely green fields where we always see deer and there is a wooded area that is always muddy and I get to jump around for ages in my welly boots, getting stuck and falling over in the mud. After the muddy part we walked past a tree and heard lots of buzzing. I recognised the sound; it sounded like bees. We looked around and right in front of us there were hundreds of bees flying in and out of a small gap in the tree. We went in for a closer look and we could actually see honeycomb inside of the hole. They must have been there for a while. We were there only for about 20 seconds, but the bees started to get angry and dive bomb us. Me and mum ran as fast as we could, but the bees kept on following us. After lots of screaming and lots more running, they finally stopped chasing us. I didn't get stung, but my mum did three times. Once we knew that we were safe, me and my mum couldn't stop laughing. I was thinking of the Winnie the Pooh story where Pooh and Christopher Robin get chased by bees and end up jumping in a big muddy puddle. Thankfully we didn't have to do that!!

Lily K

National Mills Weekend 2024, 11th - 12th May, 10.30am–5pm

In celebration of the engineers and millwrights who built and now restore and maintain Whitchurch Silk Mill, Nigel Spender of G & H Spender Engineering, will be here to talk to visitors about the many crafts used during his company's recent conservation of the Mill's Grade Two* listed Georgian waterwheel, and the historic craft of millwrighting. Included with admission fee or annual pass.

10,000 Years of Textiles, 15th May, 7–8.30pm

In this illustrated talk Angela Pawlyn, a member of the Oxford and Kennet Valley Guilds of Weavers Spinners and Dyers, will show examples of preserved textiles. Angela will explain how ancient equipment evolved into the looms seen today at the Mill. Tickets £15. Doors open at 6.30pm and tea and coffee will be available for a donation.

Children's Workshop: Make a Mini Maypole, 29th May, 11am–1pm

Book your places to drop in between 11am & 1pm with your children and help make a mini version of a May pole. Cost £3 per child aged 3–16 years. Each child can be accompanied by one adult free of charge. Book via our website.

Current Exhibition – Thailand: Colour of Culture, 4th May - 23rd June

In partnership with the National Research Council of Thailand and the Ministry of Higher Education, Science, Research and Innovation (Thailand), this exhibition showcases the diversity of Thai hill tribe folk art. Thai hill tribe communities are renowned for their unique identity and exceptional expertise in weaving textiles.

Weftival Textiles Festival, 5th - 6th July

Join us for our second Weftival event at which you can meet a community of textile and weaving professionals and learn about diverse types of weaving and textiles. There will be talks, demonstrations, production tours, a weaving exhibition and pre-bookable workshops. See the website for details.

Pins and Needles Craft Group

Our adult crafting group meets from 2–4pm on the **first Thursday of the month** and is open to all. On **2nd May** we'll teach you how to create your own tiny terrarium in a stylish lidded glass jar. We'll provide decorative stones, growing medium, plants and other embellishments, but you are welcome to bring along your own small plants if you'd like to. Tickets £12.50 per session including tuition, materials and a hot drink.

Tickets for our events are generally available from the Mill Shop or from our website via the 'What's on' page.

On Twitter, Facebook and Instagram or subscribe to our email newsletter via our website.





King Henry VIII




Tony Harris is a professional comedian, raconteur and actor who specialises in historical talks with a hysterical twist. Tony returns to us by popular acclaim following his wonderful presentation of Winston Churchill, to give us a portrayal of Henry VIII.

Join us on
Wednesday 15 May at 10 a.m.
St Mary's Hall, Overton
Free to members - Non-members £3 on the door



Life on Watership Down

21 Mar - 23 Jun 2024. Thurs-Sun.
11am-3pm. Normal admission applies.
The second half of Aldo Gall's paintings, commissioned for the beloved novel by Richard Adams, are back on display at Sandham Memorial Chapel.




What is the u3a?

It is the "University of the Third Age". We are a lively organisation in the Overton area, including Whitchurch, , for people no longer working full-time and want to keep learning. There is no minimum age and no requirement for qualifications. Our aim is to have fun, make friends, stay fit and exercise the mind. Our u3a branch has over 30 interest groups and about 200 members.

Our interest/study groups are run by members e.g. languages, crafts, history, games, lunch clubs and gardens. Talks which are held on the third Wednesday of each month, in St. Mary's Hall, Overton at 10 am. It costs £15 a year. Everyone is welcoming and friendly!

For information on talks, outings, groups and how to apply for membership:
<https://u3asites.org.uk/overton/home> email infou3aoverton@gmail.com



Checking if something might be a scam

Scams can be difficult to recognise, but there are things you can look out for. If you've seen something online or in an email or text, you can use our online tool to get advice.

For more information on scams: www.citizensadvice.org.uk/consumer/scams/check-if-something-might-be-a-scam/
free Adviceline: 0808 278 7829

THE KINGSCLERE TOWER DIRECTORY

POLICE, FIRE or AMBULANCE

Police Enquiries/Information

Emergency 999

non Emergency 101

Kingsclere Health Centre:

01635 296000

North Hampshire Hospital, Basingstoke

01256 473202

Parish Council: 37 George Street (see page 2)

01635 298634

KingsclereCharities Clerk: Jan Pearce

01635 269184

kingsclerecharities@iname.com

Dial-a-Ride

01256 462101

CHURCH CONTACTS

St. MARY'S CHURCH:

Vicar Peter Williams vicar@stmaryskingsclere.co.uk

Church Warden:

John Price johnsaprice@hotmail.com

01635297780

Administrator:

Emma Rivers

01635 299528

administrator@stmaryskingsclere.co.uk

07422 687125

METHODIST CHURCH:

Minister: Rev Rachel Borgars

07889 905753

Rachel.Borgars@methodist.org.uk

01256 895878

Secretary & Hire of Hall Jeanette Billington

01635 297585

ROMAN CATHOLIC:

Rev Patrick Tansey

0118 9814572

tadley@portsmouthdiocese.org.uk

Bas & Deane

01256 844844

Swan Street P O

01635297035

Buses

0345 8101000

Vet

01635 896 330

Trains

0845 748 4950

Dentist

01635 299981

Gas Emerg.

0800 111999

Age Concern Local Agent

08003287154

Chemist

01635 298419

Watership Down Health

0333034 1033

Kingsclere Library

01635 297464

Berkshire Vets

01635 896 333

BOROUGH COUNCILLORS

Ken Rhatigan 07850530319

Cllr.Ken.Rhatigan@basingstoke.gov.uk

Mike Bound 07833612735

Cllr.Mike.Bound@basingstoke.gov.uk

Kerry Morrow 07422651172

Cllr.Kerry.Morrow@basingstoke.gov.uk

COUNTY COUNCILLOR

Tom Thacker 07712695468

tom.thacker@hants.gov.uk

MP for N.W. Hampshire:

Kit Malthouse 01264401401

kit.malthouse.mp@parliament.uk

2, Church Close, Andover, SP10 1DP

There is a more comprehensive list of local contact numbers on the Parish Council website. Go to www.kingsclere-pc.org.uk/directory