

The Kingsclere Tower



October 2017

Your Village Magazine

The Kingsclere Tower

Editors Nicki Lee and Sarah Hewitt

Distribution Brian Elborne

☎ 298704

Advertising Les Wallace, Jada, Union Lane

☎ 298794

Assembly Janet Sturgess

Printer Kingsclere Design and Print

Layout/Cover James Cruickshank

Due to volunteers retiring the team requires some new delivery volunteers to help maintain the distribution of the Magazines in Fielden Court and Swan Street. This round involves the delivery of 39 magazines.

We also require help to share delivery of Magazines to the remoter locations of the village: Winchester Road, Stables Area, Sandford Springs and Newbury Road. These rounds will require a volunteer to have transport available.

Any help you can offer us maintaining the delivery of the TOWER will be much appreciated, please contact Brian Elborn on the following:

Home: 01635 298704

Mobile: 07741075473

email: b.elborn345@btinternet.com

Many thanks on behalf of the Management Committee and Distribution Team.

Brian Elborn, Distribution

Neither the Editor, nor the Management Committee accept responsibility for the opinions expressed or the goods and services advertised in the Kingsclere Tower magazine.

To all "Tower" Contributors

COPY FOR November to the editors at 3 Blue Meadow, Garrett Close
kingscleretower@gmail.com by **October 12th**

Copy MUST include name, address/phone number

Kingsclere Parish Council

KINGSCLERE PARISH COUNCIL (KPC)

Chairman: John Sawyer (297221)

Clerk: Louise Porton (298634)

email: clerk@kingsclere-pc.org.uk

Office: 37 George Street, Kingsclere RG20 5NH

Public Opening: Mon & Wed 9:30-11:30am



MAKING A DIFFERENCE AWARDS – We hope to be able to present the awards in January 2018, to those residents who deserve a big public thank you for their commitment in helping to keep our community. We are asking you to help us recognise them by nominating people from your group or members of the community who you think deserve recognition for all that they do. There is no limit to the number of people you can nominate but we do need to know why you are putting them forward and how you feel they have gone “that extra mile” in order for them to be considered. For an application form please contact the clerk. Thank you.

THE HOLDING FIELD AND DEVELOPING A PLAN – The council are looking at the Holding Field and how best this open space can be developed to facilitate the needs of the village. The purpose of the plan is to look at the short-term goals that are currently tabled whilst observing the longer-term objectives for the overall use of the field. In this case, develop does not mean building but ensuring that any facilities that are placed on the field are in the best location to ensure that this valuable piece of open green space continues to be an open green space.

The council has been approached by a group of young people who would like to have a skate ramp on the Holding Field. The group, now known as KSY (Kingsclere Skate and Youth) have attended several meetings of the council with ideas, quotes/proposals and are now in the stage of drawing up a Project Plan.

The first draft of the Holding Field Plan was available at the Village Fete

GREEN WHEELY BINS – Collection days for October: 11th and 25th

and discussions will be occurring at council meetings. The council welcomes resident's opinions on this, and other projects, but anonymous comments/feed-back cannot be considered – we have to know that the information provided is from a parishioner. It is anticipated that a public meeting for this project may be required.

WAR MEMORIAL – The War Memorial, located in St. Mary's Churchyard has developed a crack in the upright column and cross. The Parish Council have obtained quotes for the repairs and have applied for grant funding for the work which we hope to complete before the Centenary Celebrations in November 2018. In the meantime, for safety reasons and to prevent further damage, a quote has been obtained to strap the upright. Please do not be alarmed if you see the straps on the memorial, they are only temporary until the more extensive repairs can be undertaken. Planning permission will be sought as soon as The War Memorial Trust have approved the suggested repair.

COMMUNITY ORCHARD – The parish council were left a parcel of land (known as the pony paddock) adjacent to the allotments in Longcroft Road following the development of the new houses there. The land is going to become an open space for residents to enjoy and will include a community orchard. Planting of the 1st quarter of the orchard is scheduled to start this autumn – the trees are on order. If you would be interested in planting a tree, please contact the clerk (contact details above). Cllr Nicky Peach will be coordinating the project and will contact those interested when we are ready to plant.

NEXT PARISH COUNCIL MEETING – will be at 7:30pm on Monday 30th October 2017, in the Village Club, (unless otherwise notified). We welcome the attendance of all parishioners at our meetings and anyone who wishes to raise any matters of concern will be given the opportunity to do so.

The Parish Website www.kingsclere-pc.org.uk

@kingsclerepc [facebook.com/KingsclereParishCouncil](https://www.facebook.com/KingsclereParishCouncil)

Parish Paths

Despite a rainy morning we had a great turnout of volunteers for the Parish Paths working group.

A team of seven people cleared vegetation around paths at Strokens farm, two people cleared the path from the pond to Fox's lane and two people worked on the path along from Hollyshot lane. The "pram" had its first outing of the season skilfully manoeuvred by Adam !

The next working group meeting is Sunday 24th September meeting at the village club at 9.45. New volunteers welcome .

Ian and Pam, Kingsclereparishpaths@btinternet.com

Before and After



Nature Notes

A stone was moved in the garden and there, where it had been, was an earwig. So what? Well it would be nice, if that were the reaction, as it might imply that they were still commonplace but it is a long time since seeing one. They used to be a major enemy of gardeners who grew prize blooms as they ate petals and spoiled the effect of the flowers although they also ate greenfly. They made their nests in the hollow of supporting bamboo canes and an effective but cruel way of eliminating them was to squirt a few drops of paraffin into each cane-evacuation was swift. They were just part of everyday living and every child knew that they would enter ears and bore into brains to lay their eggs given half a chance, just another myth that insects have to endure. Stand by for a furious reaction from folk who are overrun by these creatures.



September 5th swallows were beginning to line overhead wires limbering up for their southward flight.

Almost as if celebrating the 20th year of the handing over of Greenham Common one of our tiniest wild orchids has flowered abundantly across the common this year. Thriving on the gravel and thin grass the Autumn Ladies Tresses orchids have greenish grey stems bearing a spike of tiny, fragrant white flowers spiralling up the stem, hence the botanical name *Spiranthes spiralis*. No taller than six inches they seem to be avoided by the grazing livestock.

A pair of Marsh tits are regularly visiting the sunflower feeders this summer- a first in the garden. Their distinctive song distinguishes them from the almost identical Willow tit. Only an experienced birder can accurately name one from the other if no call is heard so alike are they. A real effort to make the feeders out of bounds to rooks, jackdaws and magpies may be encouraging shyer birds to the feeders.

Diana Tait and Rod Eldred



Kingsclere Community Library

Jo Cooke, author of 'Understanding Hoarding' will be discussing her book at the library on Wednesday, 27th Sept.

Join us to learn more about this disorder and the effects it has on people, and what can be done to help.

Tickets £5 from the library, includes glass of wine.

Book Sale!! Saturday 21st October, please bring your donations to the library after 21st September. (Books only please, no music/DVDs)

Thank you to everyone who entered the **Costume Competition** at the Kingsclere Fete. Everyone looked wonderful and all deserved their prizes. The top winners were:

Phoebe Lancashire – The Very Hungry Caterpillar – 1st place

Poppy and Harry Fulbrook – Cinderella and her Pumpkin – 2nd place

Georgia Collins – Gangsta Granny – 3rd place

What is the best dishwasher? Who should I buy breakdown cover from? Use the library computer to answer these questions with our **Which?** Membership at NO CHARGE.

Rhymetime with Rita on the second Tuesday of every month

Opening hours: Tues & Thurs 1 – 5:30; Saturdays 9:30 – 2

Nicki Lee, kingsclerelibrary@gmail.com



Entries from our Costume Competition



Coach Trips

As usual I had arranged for six coach trips during 2017. Unfortunately, through lack of support, I had to cancel three. So in the future I will no longer be arranging coach trips from Kingsclere.

Josie Norton, 299059

Kingsclere Singers

with Tadley Singers

Present

'Sounds of 100 voices'

Sat 21st October 6-8pm

The Fieldgate Centre, Kingsclere, RG20 5SQ

Music to include 'Fields of Gold', 'Hallelujah', 'Bridge over troubled water' and other well-known favourites.

This will be a FREE event with a raffle & a retiring collection for two local charities. The bar will be open throughout the evening.



KINGSCLERE & HEADLEY WOODLANDS W.I.

Venue: Kingsclere Village Club, George Street

The Speaker booked for our next meeting on Wednesday 11 October (this month) is Dr Becky Peacock of Mid-Hants Railway, The Station at Alresford and her subject is intriguing: 'Women on the Railway'. This talk on the ever-changing role of women at work, particularly in the rail travel industry, includes a short, historic bit of film footage.

WE WELCOME VISITORS AT JUST £2 PER PERSON.

What to do? It's easy! Just arrive at 1.30 to sign in at the reception table on entering the main hall. We serve tea & biscuits during the half-hour break between our short meeting and the talk. Our committee and members are always happy to see new faces.

Nova Saunderson, 299570



KINGSCLERE NEIGHBOURHOOD PLAN

It has been a few months since I last updated you on work on the Neighbourhood Plan. Meetings have been held with Basingstoke & Deane Borough Council and the group have been revising the plan in light of comments received from the consultation. The revised plan will be submitted to Basingstoke shortly when you will have another opportunity to comment prior to the official examination. For further information, contact Cllr. Sue Adams, 01635 299242, sueadams@madasafish.com, or our Parish Clerk, Louise Porton, 01635 298634, clerk@kingsclere-pc.org.uk



Events in October and beyond...

Saturday 14th	60s, 70s & 80s Disco
Saturday 22nd	Kingsclere Singers & Tadley Singers event
Saturday 4th Nov	FKS Bonfire Night
Tuesday 7th Nov	Kingsclere Community Association Annual General Meeting at 7.30pm. All welcome.

If you need a venue for a meeting, a party, a dance class, a theatre production, or a home for your club, then do get in touch and we will be pleased to show you around. Our bar with social area and a fully equipped kitchen, complements our event space, plus easy access and ample parking.

You are guaranteed a friendly welcome here at The Fieldgate Centre, so why not try something new or reconnect with...

Zumba	Pilates (day and evening)
Yoga	Slimming World
Short Mat Bowls	Julie Upshall Fitness
Ceroc Dance Club	Football (men and women)
Rugby (adult and minis)	Netball
Cricket (Adult and colts)	

The disco is growing in popularity thanks to Les and his team. See the advert on Freeview TV Channel 7. £7 for table reservation. Further information on 07968438775

More information can be found on our website www.thefieldgatecentre.co.uk

Our office hours are Monday, Wednesday and Friday morning 9am-1pm. Tel: 01635 298497



Kingsclere Village Club

Whalebone Orchestra and Kingsclere Youth Ensemble on Saturday October 21st

Come along and be entertained by the Whalebone Orchestra who play eclectic acoustic music along with the village's very own Youth Ensemble.

Tickets are priced at £10 and are available on the door.

Rooms to hire

If you are planning a special event in the future The Village Club has a variety of rooms available to hire. There is the main hall as well as some smaller rooms. There are also kitchen facilities. For further information please email bookings@kingsclerevillageclub.co.uk



The Lions "MESSAGE IN A BOTTLE" scheme

Loddon Valley Lions have now distributed the 7000th "Bottle" in our catchment area. The "Bottles" are available free of charge at local surgeries, pharmacies and various community support groups, and are intended to contain info such medical details, next-of-kin and other contacts such that it is readily available in the event of an emergency .

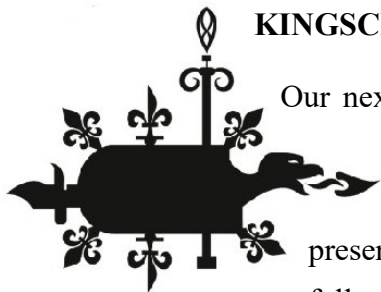
23rd Annual Charity Golf Tournament was at Bishopswood Golf Course, Tadley on 4th Sept. and raised £1500 of which the beneficiary was St. Michaels Hospice.

Our 35th annual Firework Fiesta is on Sat 4th Nov. at Barlows Park, Silchester Road, Tadley, complete with Funfair and refreshments. There will be 2 displays with an earlier one for the younger audience. The "Best Guy" competition will give free entry to each child who brings a "Guy."

The Club's latest Charity donations also include a combined initiative with Basingstoke Lions to fund work for Dove House School near Petersfield with each Club contributing £1250 to fund the work which was carried out by a charity group Team Rubicon, who are ex-Service personnel who are on call to assist at disaster sites around the world.

Ken Williamson, PR Officer Loddon Valley Lions

KINGSCLERE HERITAGE ASSOCIATION



Our next speaker meeting will be on THURSDAY
19th OCTOBER at the Village Club com-
mencing at 7.45pm when Richard Croft will
present " The Story of Kingsclere Part 2 ". This
follows on from our presentations last Autumn

which were very well received. Richard will this time pick up the story of
the village in the Tudor period and trace it through to the 19th century.
Another interesting evening is in prospect. Guests are welcome at all our
meetings at £3 pp.

This presentation will be preceded by our Annual General Meeting at
7.00pm. which is also open to non-members.

Michael Leah, Hon Chairman, 297403



Enquiries 0345 2601501 or www.andovercats.org.uk
Fund-raising/volunteers 07733 242196,
coord@andovercats.org.uk
Items for resale 01256-892773

We had a very successful fortnight in the Whitchurch Charity shop. Our
next venture is a collection at Tesco, River Way, Andover on Friday 6th
October. Please come and make a donation. All gifts of cat food will also
be gratefully received.

Clyde has at last found a home and is very happy. Also Birty, last month's
cat has found a home too.

Shaggy is 7 years old and came into our care as she did not like the dogs
in the house. She is a little unsettled because of her change of circum-
stances but will make a lovely pet. She has lived with children but we
think would prefer to be an only cat.

The Church Pages



Reflections

In June and July, we asked you to fill in a card which had the
question 'What hurts you the most?' as part of the Who Cares
initiative. 59 churches across Hampshire were involved and in total we
collected 11,798 responses. In Kingsclere, Ashford Hill and Headley we
collected almost 120 responses. We are really grateful to those who asked
the question from our churches and those who answered them.

The responses have been put into eight different categories. The biggest
category in our parishes was negative emotions. This included mental
health issues, fear and anxiety, stress, concern about ageing, sadness, an-
ger and love. The next biggest categories were relationship problem
(including friendships, romantic relationships, bullying) injustice
(including terrorism and war) and family (including parenting and family
illness). The final categories were physical suffering, death, loneliness,
and money.

Comparing that to the whole of Hampshire, and you realise we are not
alone in what hurts us the most. The biggest categories across Hampshire
were Negative Emotions, Relationship problem, family and injustice (the
same four biggest categories as in our parishes with slight change in order
of the third and fourth largest). We, as a church, will be reflecting and
praying about how we might respond to these hurts over the coming
months and hope to be able to demonstrate that God cares for each mem-
ber of our communities.

When we experience such hurts, my prayer is that we might know God's
presence among us, alongside us, and invite him to live in us by His Holy
Spirit. Jesus is able to sympathise with our weaknesses, because He be-
came weak and experienced hurt and suffered. And yet He is also able to
help and calls us to draw near to him "that we may receive mercy and find
grace to help in time of need" (Hebrews 4:15-16). We will continue to
pray for our communities here and would love to see you on a Sunday
morning to remind you of who God is and to encourage you to put your
trust in Him, whatever the hurt you feel or the challenge you face.

Blessings,

Ben

Services in October 2017

Sunday 1 st October Trinity 16 / Proper 21	8am	Holy Communion – St Paul's, Ashford Hill
	9.15am	Holy Communion with Junior Church – St Mary's, Kingsclere (breakfast 8.45am)
Sunday 8 th October Trinity 17 / Proper 22	8am	Holy Communion – St Mary's, Kingsclere
	9.15am	Morning Worship with Junior Church – St Mary's, Kingsclere (breakfast 8.45am)
	10.30am	Holy Communion – St Peter's, Headley
Sunday 15 th October Trinity 18 / Proper 23	8am	Holy Communion – St Peter's Church, Headley
	9.15am	All Age Messy Worship – St Mary's, Kingsclere (breakfast 8.45am)
	11am	Holy Communion – St Mary's, Kingsclere
Sunday 22 nd October Trinity 19 / Proper 24	8am	Holy Communion – St Mary's, Kingsclere
	9.15am	Morning Worship with Junior Church – St Mary's, Kingsclere (breakfast 8.45am)
	10.30am	Holy Communion with Baptism – St Paul's, Ashford Hill
Sunday 29 th October Trinity 20 / Proper 25	8am	Holy Communion – St Paul's, Ashford Hill
	9.15am	Morning Worship with Junior Church – St Mary's, Kingsclere (breakfast 8.45am)

Our ABC service for children and their carers will be held in St Mary's, Kingsclere on 16th October at 9:30 am

St. Mary's Church		
Vicar	Rev Ben Read, The Vicarage, Foxs Lane	☎ 298471
Churchwarden	Sarah Mussett Sarah.mussett@hotmail.com	☎ 291900
Churchwarden	Eileen Selsey eileen.selsey@hotmail.co.uk	☎ 42962
Administrator	Emma Rivers administrator@clerewoodlands.org.uk	☎ 07790 934972

From the Registers of St Mary's

Weddings *Those whom God has joined together*

1st Sept Michaela Grimshaw & Lee Hamilton

Funerals *I am the resurrection and the life says the Lord*

31st Aug Janet Bradley (burial of ashes)

Kingsclere Methodist Church

Preachers and Services for October

1st October Rev Rachel Borgars Harvest Festival
 Donations of Tinned and Dried Items would be appreciated and will be donated to Basingstoke Food Bank.
 8th October Tim Gardner Morning Worship
 15th October Rev Elaine Rawlings Alternative Worship with Holy Communion
 22nd October John Waterer Morning Worship
 29th October Sheila Ayres Morning Worship
 All Services start at 10am

Wendy Morgan

Lighting Up St Mary's

28th September For Nicola, on her birthday.
 6th October For Terry Mark our dearest son and brother. Every Memorable Photograph Accentuates Terry's Happiest Years. Love Dad, Mum, Sally, Charlotte and Family
 21st October Remembering Neil on his birthday. Love Always x Elaine, Christopher, Suzanna, Helen, Chris, Thomas and Oliver.

To book please contact Andy and Sarah Bates, Brook House, Popes Hill, Kingsclere RG20 5SJ. 01635 299710. Online www.clerewoodlands.org.uk £12 per evening, block booking discounts. Cheques payable to St Mary's Kingsclere PCC, gift aid welcome. Deadline for November Tower is October 10th.

Sarah Bates

Roman Catholic		
Rev Patrick Tansey	tadley@portsmouthdiocese.org.uk	0118 981 4572
Methodist Chapel		
Chief Warden	Wendy Morgan	☎ 297538
Secretary/Hire of Hall	Jeanette Billington	☎ 297585

St Mary's Fete August BH

It was a wonderful day - full of sunshine, visitors, community spirit, good humour, good food, dogs galore, loads to buy and lots and lots to do... the combined efforts of everyone involved contributed to takings of over £6000 (final amount to be confirmed and donations still coming in). Thank you so much to everyone who helped, in whatever way possible – helping on a stall, buying produce, bringing your dog, or just coming and enjoying the day.

We could not have done it without you.

The Fete Committee (Debra, Martha Evelyn, Eileen, Les, Maggy).

NB Next fete BH Monday 27 August 2018 - start collecting bric a brac now!

“Zozulenka” Concert

St Mary's Church, 23rd October at 7pm.

The singing and dancing ensemble will perform on behalf of the charity Hope Now, a Christian charity that supports those in need in the Ukraine. They work in healthcare, in orphanages, rescue shelters and sheltered accommodation as well as through summer camps for children and widows. The concert is free, but donations to the charity will be welcomed. Last year's concert was an uplifting and vibrant, fun evening and we're looking forward to seeing this year's group perform. For more information on the concert in Kingsclere contact administrator@clerewoodlands.org.uk, or to learn more about Hope Now look at their website www.hopenow.org.uk

200 200 200 200 200 200 200 200 200 200 200 200 200 200 200

St Mary's 200 Club Winner September 2017, no 109 Steve Jaques

Well done, Steve

Entries drawn first week of each month, various village venues.

Friends of St Mary's Kingsclere Ltd

Following a delightful and fascinating visit in August to Frith Herb Farm at harvest-time, our next Friends' event, kindly offered by the organisers, will be the special Friends' Preview Evening of the Art Exhibition on Thursday 26th October. This will again be held in the Kingsmill Room, from 7 p.m., with wine and nibbles. All Friends, and anyone wishing to join (only £10 a year for individuals, or £20 for family membership) are most welcome.

This Preview gives Friends the opportunity of an advance viewing of the wide range of art works in various media, before the Exhibition is open more widely from the following day (on Friday & Saturday from 10 a.m. to 6 p.m., and on Sunday from 12 noon to 5 p.m. Admission is excellent value at £1, with no charge for school children).

Future FOSM events for the diary are our AGM in the Kingsmill Room on Wednesday 8th November, the post- Christmas Village Walk on Wednesday 27th December, and the ever popular Quiz Night and Ploughman's Supper at the Fieldgate Centre on Friday 19th January.

Peter Turner, Chairman

CAMARADERIE (Together in Friendship)

Wednesday 18th October, 2pm

In the Methodist Church Hall

Afternoon Tea and Entertainment

£1 which includes a free Raffle Ticket

Wendy Morgan

‘AUTUMN COLOURS’

A unique variety concert!

Saturday 28th October 2017 at 7pm

St Paul's Church Ashford Hill RG19 8AZ

Tickets £7.50 adults, children Free

Reserve your tickets now to collect on door

01635 299227 or buy tickets at Headley Village Shop,

The Village Butchers Kingsclere

Through October

Refreshments and Raffle

A variety of wonderful performances and some young talented performers too!

A concert for everyone

Money raised will be split between Ashford Hill School and St. Paul's Church

KINGSCLERE PHOTO CLUB

A thriving and friendly club covering digital and film photography, also traditional darkroom. Meetings the first Wednesday of the month at the Village Club, George Street 7.30pm for 7.45pm start

10th ANNUAL PHOTO EXHIBITION - Sat 14th & Sun 15th October 2017

In the main hall, Kingsclere Village Club, George Street. Sat 10am – 5pm, Sun 11am – 4pm. See the photos and vote for your favourite!

Launch of our 2018 Calendar @ £6 each.

No portraits this year, but instead we will be raffling a portrait session and mounted A3 print by our award-winning photographer Mark O'Leary (of M.O.L Photography) in his new studio in George Street, tickets £1 each.

For more information see our website: www.kingsclerephoto.org or contact Gareth Martin on (01635) 299227 or gareth.martin24@btinternet.com

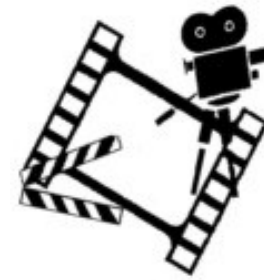
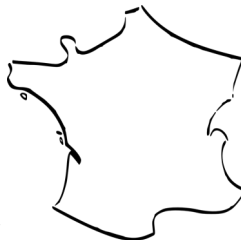


Our 2015 exhibition

Kingsclere Twinning Association

Our next event will be a Beaujolais Evening and Quiz on Saturday, December 2nd at The Village Club. There will be a two course supper, bar and wine. Please make a note in your diary. Further details to follow. All are welcome. No need to be a member or in a team.

New members are always welcome to join. Family membership is £5 per year and includes reduced admission prices to most of our events, free monthly French conversation/class, depending on confidence level and the opportunity to visit Cormicy in the Champagne region of France. For information please contact kingscleretwinning@yahoo.co.uk or telephone Sue Watson on 01635 298940

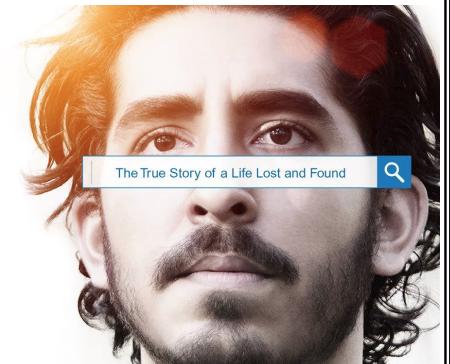


Kingsclere Film Club

NEW SEASON - NEW MEMBERS WELCOME
ANNUAL GENERAL MEETING

Saturday, 7 October, 2017 at 7.30pm at the Village Club, George Street,
AGM followed at 7.45pm by

DEV PATEL ROONEY MARA DAVID WENHAM AND NICOLE KIDMAN
L I O N



True story of 5 year old boy's loss, survival against the odds, growth into manhood and return to his homeland. Set in India and Tasmania.

Next month: 11 November Lust for Life - Life of Vincent van Gogh.
'Kirk Douglas' finest performance'

Kingsclere Film Club subscription membership gives access to all films shown each month on the big screen (averaging out at £4.16 per month). Guests are always welcome at £7.50, subject to space.

Contacts: John Sawyer (Chairman) 297221 or Diana Tait (Membership Sec) 298494

Kingsclere Gardening Association

Thursday 12th October.

Meeting at The Village Club, 7.30pm members free, visitors £2.00.



Our speaker is Mrs. Sally Burr from Oakley who is giving a demonstration on preparing containers/baskets for the autumn/winter. Sally will also have suitable plants for sale.

The club will have daffodil bulbs to grow and show in the members' class at our Spring Show.

The table top competition: a vase of flowers of one kind, a mixed vase of flowers/foilage and berries, one kind of fruit max 4, a single stem from the garden, a pot plant.

For our November meeting we have Mr. Stephen Oaks from near Salisbury. His talk is birds in your garden. Mr Oaks is a keen supporter of the R.S.P.B and will no doubt have cards and calendars to sell to support this cause.

John Elkton, 01256 850017

CHRISTMAS DAY LUNCH

In the Kingsmill Room,
St Mary's Church



Back for it's fourth year, we will be hosting a traditional Christmas Lunch, on Christmas Day, for people and couples who find themselves on their own this festive season.

MORE DETAILS TO FOLLOW IN NEXT MONTH'S TOWER

but if you do have any immediate queries please call Pippa Ashton on 01635 298448 / 07775 903214

The Ashton Family



THE PARENT TEACHERS ASSOCIATION OF KINGSCLERE PRIMARY SCHOOL

News from FKS

A new committee was elected at the recent FKS AGM and news of our upcoming events will be out soon. If you would like to help at events over the course of the year your help is always needed and appreciated.

If your children have out grown their uniform or have left the school please leave any unwanted uniform at the school office as we will have a second hand uniform sale soon.

Kingsclere's firework and bonfire display will take place on Saturday 4th November 2017 at the Fieldgate Centre. The gates open at 5.30pm, with a fantastic firework display at 6.30pm (no pets or sparklers allowed). Refreshments will be available and the Glo Tent will be back with fun things to buy!

Great value tickets will be available from Swan Street Stores or Kingsclere C of E Primary School Office.

All proceeds from this event provide much needed support for Kingsclere C of E Primary School supplying equipment and extra curricular opportunities for the children.

Don't miss out on this great community event, get your tickets soon & invite your family and friends to come along too!

If you are able to help on the night with setting up, marshalling or on a stall please let us know.

Rachael Knight FKS Tel: 268160, e:knightrachael@hotmail.co.uk

SILCHESTER PARISH CHURCH

5 P.M. ON SATURDAY, 14 OCTOBER 2017

WINCHESTER CATHEDRAL CHOIR

(Lay Clerks and Boy Choristers)

CHORAL EVENSONG

(Book of Common Prayer)

RETIRING COLLECTION

Don't miss this opportunity of hearing first class singers from a world-famous cathedral
Enquiries Ralph Atton 0118 970 0825 or
Richard Fletcher 0118 970 0633





Kingsclere Village Bunnies Baby and Toddler Group

Where: The Village Club, George St

When: every Tuesday, 9am-11am

Cost: first visit free. After that, £1 for bumps and unweaned babies. £2 for first child (including snack donated by Swan St Stores) and 50p for additional children.

Every week we have a range of indoor and outdoor toys (depending on the weather!) for babies and toddlers. We also set up a weekly craft activity and have a snack of fruit and carbs for all those who want to join in. We have a protected baby area with bouncy chairs, rugs and baby toys for them to use. We are a friendly group and are also looking for new members to come and join the committee to help with opening up once a month.

Please check our Facebook page (search "Kingsclere Village Bunnies") to find out more about the group. We also have a Preloved page on which you can buy, sell and give away items locally.

villagebunniestoddlergroup@gmail.com

Sandham Memorial Chapel

Events October 2018

Monday 11th October Chapel Talk – 11am – 1pm £6 – usual admission applies.

Friday 6th October "From Spencer to Abstraction" – Silk Painting workshop 10.30am – 3.30pm £45

Tuesday 10th October Communion Service 10am

Saturday 14th October First World War poetry reading 11am – 4pm – free – usual admission applies

Alison Paton, Sandham Memorial Chapel, 01635 278394



St Michael's Hospice Coffee Morning

Saturday 4th November 2017

10 am – 12 noon at the Village Club

Please come along to the Village Club for a cup of coffee and cake on Saturday 4th November in aid of St Michael's Hospice. There will be cake/bread stalls, tombola, raffle, Christmas cards.

Your support is much appreciated. If you would like to donate a raffle prize or bake a cake please contact me and I will gladly collect.

Sarah Melling 297823

Josie Norton

'On behalf of everyone at St. Michael's Hospice, I would like to thank Josie Norton for her outstanding support as a volunteer and fundraiser over the past 20 plus years. It has been a pleasure to work with Josie and we are so grateful for her phenomenal dedication and commitment to the Organisation. As she steps down from her role we would like to wish Josie all the best and once again thank her for her incredible support and kindness.'

Iain Cameron

**Director of Income Generation & Deputy Chief Executive
St. Michael's Hospice (North Hampshire)**



Royal British Legion Poppy Appeal 2017

We are having a Table Top Sale to raise funds for The Poppy Appeal on Saturday 21st October in Kingsclere Methodist Church Hall from 11am until 1pm.

There will be a Raffle, Guess the weight of the Cake and various other Competitions. Home Made Cakes will also be available for sale.

To book a Table, costing only £5, or for any enquiries please contact Wendy on 01635 297538.

We hope you will support our Appeal and we look forward to seeing you.

Wendy Morgan, Poppy Appeal Organiser



Kingsclere Bowling Club

We have come to the end of a very enjoyable season, the weather has been good on the whole and thanks to the efforts of our volunteer ground staff the green has been a pleasure to play on.

On the weekend of the 9th and 10th September the finals of our club in-house competitions were played and, despite some showers, some excellent matches were enjoyed by the spectators. Now that they have been completed, we have the list of this year's competition winners:

Competition	Winners
Men's Singles	A Stillings
Ladies' Singles	E Stephens
Handicap Singles	G Norris
Two-Wood Singles	W McGhee
Novice Singles	A Fisher
Handicap Pairs	P Cooper, G Drewe
Olden Cup	P Cooper, R Denny
Mortimer Cup	D Berry, E Buckland, P Cooper
Champions Cup	C Howard, E Stephens
Jack's Cup	P Read, E Parker
Ashes Cup	A Cooper, E Stephens
Sandy Walker Cup	E Stephens, A Fisher, D Meredith
President's Day	J Evans, A Cooper, H Johnston
Captain's Day	J Walker, R Allen, P Read
Rose Bowl	E Stephens, M Howard
Agnes Lawrence	E Stephens

The prizes will be presented at our end of year Presentation Evening on the 7th October, followed by a game of Skittles and fish and chips in the club house. During the winter we will be hosting a number of fund raising events; the first of which will be a Christmas Bingo evening on Saturday 2nd December. Non-members are more than welcome to come along. For full details view our website (<http://kingsclerebowlingclub.co.uk/>).

Would you like your Tower on-line?

Subscribe and receive the Tower by email every month. Please email Kingscleretower@gmail.com with 'subscribe' in the subject line. Do you know anyone who has left the village but would like to keep up with the news? Please let them know, too.



THE KINGSCLERE TOWER DIRECTORY

Editor: 3 Blue Meadow, Garrett Close.
email: kingscleretower@gmail.com
Advertising: Jada, Union Lane, Kingsclere ☎298794
leswatershipdown@hotmail.com

POLICE, FIRE or AMBULANCE **Emergency 999**

Police Enquiries/Information **non Emergency 101**

Kingsclere Health Centre: 296000

North Hampshire Hospital, Basingstoke 01256 473202

Kingsclere & Ashford Hill with Headley Care Group:

General Enquiries 01635 298794 *Transport only* 07880-658187

Parish Council: 37 George Street (see page 2) 298634

Dial-a-Ride 01256 462101

Churches: *see contact details within Church Pages inside*

Bas & Deane	01256 844844	Cub Scouts	298413
Buses	0345 8101000	Girl Guides	299875
Trains	0845 748 4950	Kingsclere Library	0300 555 1387
Gas Emerg.	0800 11999	Post Office	298211
S.Electric	0845 770 8090	Vet	29557 or 40565
S.Water	0845 278 0845	Dentist	0844 576 9339
Busy Bees	297576	Fieldgate Centre	298497
Chemist	298419	Village Club	297913

BOROUGH COUNCILLORS

Ken Rhatigan 07850 530319 cllr.ken.rhatigan@basingtoke.gov.uk

Donald Sherlock 01672 521247 cllr.donald.sherlock@basingtoke.gov.uk

COUNTY COUNCILLOR

Tom Thacker 01264 738464 tom.thacker@hants.gov.uk

MP for N.W Hampshire:

Kit Malthouse 01264 401401 kit.malthouse.mp@parliament.uk
2, Church Close, Andover, SP10 1DP

There is a more comprehensive list of local contact numbers on the Parish Council website. Go to www.kingsclere-pc.org.uk/directory