



The Kingsclere Tower

What's On & Local News

NOVEMBER 2025

T The Kingsclere Tower

EDITORIAL TEAM: Mike Stokoe, Stephen Steare, Steven Gaines, Cathy Williams
 ADVERTISING: Brian Elborn b.elborn345@btinternet.com tel 298704
 DISTRIBUTION: Brian Elborn tel 298704
 ASSEMBLY: Andrew Kitch tel 299743
 PRINTERS: Kingsclere Design and Print
 COVER: Autumn leaves *Cathy Williams*

Remembrance services are held in November to honour British and Commonwealth armed forces members killed in all wars and conflicts worldwide. Details of local services can be found on Pages 12, 13 and 14.

On Saturday 8th November Kingsclere Primary School is hosting a Firework Festival, see Page 6 for details.

Winter is coming and so is Panto, with the Kingsclere Players performance of Snow White at the end of November and beginning of December at The Fieldgate Centre; not to be missed!

Other local events planned for the run up to Christmas include; St Michael's Hospice Reindeer Run in Basingstoke, Carols and Crafts at ShipInnArts, a Christmas Market at the Village Club, a concert of the Highlights of Handel's Messiah at Ashford Hill, Yule Sing and Community Singalong with The Kingsclere Singers, and an evening of Baroque Christmas music in Burghclere. See inside for more details.

The Editor

Neither the Editors nor the Management Committee accept responsibility for the opinions expressed or the goods and services advertised in the Kingsclere Tower magazine. The Editors reserve the right to omit, amend, or condense any item submitted for publication.

To all "Tower" Contributors

Copy for December 2025/January 2026 to the Editor at:

kingscleretower@gmail.com

NOT LATER THAN 12th November 2025.

If possible please submit articles as a MS Word document, A5 page size, font Times New Roman 11, single spacing. *If email not possible, post to:*
 23 Swan Street, Kingsclere, Newbury RG20 5PP.

Will ALL contributors please include full name

Kingsclere Parish Council

Email: clerk@kingsclere-pc.org.uk
Telephone: 01635 298634
Office: 37 George St, Kingsclere RG20 5NH
Website: <https://www.kingsclere-pc.org.uk/>



THANK YOU - Louise Porton - Our amazing and very efficient Responsible Financial Officer has sadly resigned from her position. Louise's 10 years as a valued KPC employee, along with her previous years of service as a Councillor, have been truly invaluable and exceptional. The care, dedication, and commitment shown, always going above and beyond, have left a lasting mark on the Parish and those she worked alongside over the years. Louise's outstanding resolve in the Covid pandemic showed amazing leadership and strength as she helped steer the Council through such an alarming and worrying time for everyone, whilst simultaneously volunteering to help elsewhere in the Parish; from the introduction of the new software and her work on the Cemetery Mapping, alongside all the new policies and projects she undertook are just some of her amazing achievements. KPC are thankful for everything Louise has given over the years. We wish her all the very best. Louise will be greatly missed.

LOCUM FINANCIAL OFFICER – We welcome Melanie who is with us temporarily until a permanent Responsible Financial Officer can be recruited.

MONEY FOUND – If anyone has dropped some cash in the area around the Square / The Crown please do contact the office with details of when, how much and what it was stored in, and we can hopefully get it back to you.

Road Closure – Remembrance SUNDAY 9th November – The Parish Council has applied for the temporary road closure again this year in the center of the village for the Remembrance Parade along Swan Street and the Silence at 11am. We respectfully ask motorists to be mindful of this from 10.45am onwards. At the time of writing firm details are yet to be agreed with the RBL.

GREEN WHEELY BINS & GLASS RECYCLING – The collections dates are Wednesday 12th and 26th November, and 10th December

NEXT PARISH COUNCIL MEETING – The next Full Council Meeting is scheduled for 7:30pm on Monday 24th November 2025. We welcome the attendance of all parishioners at our meetings and anyone who wishes to raise any matter will be given the opportunity to do so during Public Questions.



**Supporting Hampshire's Heart: Help for
Community Groups, Charities & Village Halls**

Visit www.actionhampshire.org.uk or call 01962 854971 to learn more



NHS App Notifications: We have been asked by NHS England to re-iterate the importance of having notifications switched on and enabled for the NHS App to ensure that all messages are received in a timely manner. To enable notifications in the NHS App, open the app, navigate to "More," then "Account and settings," and finally "Manage notifications." Toggle on the option to "Send me notifications about new messages." Ensure notifications are also enabled in your other device settings too. Please note that these changes will need to be done directly via your NHS App.

Flu Programme Autumn 2025: Please keep an eye on our website (www.watershipdownhealth.com) for all flu vaccination updates. Note that we still have flu vaccine available, however all Covid vaccines will need to be booked through **119** or the **HIOV Covid Helpline Tel 0300 561 0018** (available Monday to Friday 09:00 – 16:00 hrs). The adult programme runs until March 31st 2026. The national booking system is now open for both Covid and flu vaccinations <https://digital.nhs.uk/services/vaccinations-national-booking-service>.

Eligibility criteria for a COVID-19 vaccine are:

- residents in a care home for older adults
- all adults aged 75 years and over
- persons aged 6 months and over who are immunosuppressed, as defined in tables 3 and 4 of the COVID-19 chapter of the Green Book

Eligibility criteria for a Flu vaccine are:

- pregnant women
- all children aged 2 or 3 years on 31st August 2025
- children with certain long-term health conditions
- primary and secondary school aged children
- all children in clinical risk groups aged from 6 months to under 18 years
- everyone aged 65 years and over
- individuals aged 18 to under 65 with certain long-term health conditions
- care home residents
- carers in receipt of carer's allowance, or main carer of elderly or disabled person
- those living with people who are immunocompromised

St Michael's Sword and Scales

Rise to follow flaming goal
 Drawn to weigh the fallen soul
 Lit by glow of my bright Star
 Standing true on balanced bar.

Forth again to meet the Flame
 Showing height and depths of shame.
 Rising up on wings of Dove
 Living life in Light and Love.

Paul Jenkins

Kingsclere Local History Association

Missing Oral History Tapes



We are currently digitising the oral history cassette tapes of old memories from the Village Archives, and have unfortunately found some are missing! They are: Tape F1 (Tom Wellman), Tape F2 (Mrs Pearson), Tape F4 (Jack Smith, Len Ellis & Marie Gundry) and Tape F5 (Molly Pearce).

It is such a shame if they have been lost; if anyone *has* borrowed them in the past could you kindly return, or let me know and I can collect? Many thanks.

Gareth Martin, Secretary

Mobile/Text/WhatsApp 07796 217840
kingsclerelocalhistory@gmail.com

Kingsclere Local History Association



We began our new programme last month with our AGM and Social evening in celebration of our 25th Anniversary.

Our next meeting will be on **Thursday 20th November** when local historian and author Ian Porter will revisit us and give us a talk entitled "**Elizabeth Garrett Anderson, The First Woman Doctor**". Two other women laid claim to be the first, but Elizabeth Garrett was the best known and the most influential qualifying her to be accepted as first. A huge number of obstacles were put in her way, but as her fame spread she became interested in many women's issues and particularly public education. We will hear of her battles and the huge legacy she left behind.

We meet at **Kingsclere Village Club, 37 George Street at 7.30pm**. Visitors are always very welcome at £3 p.p.

Michael Leah, Chairman, tel 297403



THE HISTORY OF SHAW HOUSE

Sarah Somerville

Sarah first worked at Highclere Castle, and on completion of her degree in Museum and Gallery Studies now works at Shaw House as the Visitor Services Officer. With over 400 years worth of history there are lots of fascinating stories to tell!

Join us for this talk

Wednesday 19th November, 10am at St Mary's Hall, Overton

Free to members - Non-members £3 on the door



The Fieldgate Centre is run by Kingsclere Community Association, as a charity (No 1168366). The association is made up of volunteers who rely on the support and participation of the community.

It seems like 2 minutes ago it was January and now here we are looking ahead to November. The Fieldgate Centre continues to be busy and bustling with its full diary of classes, clubs and activities. Check our website for full details and come and join us for Pilates, Clubbercise, Ceroc, Slimming World, Kingsclere Singers, Badminton, Darts, and Monthly Meet Up.

The next **Repair Café** takes place on **Sunday 9th November**. Come along with your recycling and broken household appliances and see if they can be fixed.

Monthly Meet Up takes place on **Tuesday 18th November** from **2.30pm - 4.30pm**. Come along and enjoy a cuppa and a catch up, a slice of cake, some craft activities, and a quiz. Always a lovely afternoon, everyone is welcome.

The centre is awash with **Kingsclere Players** busily rehearsing for their very fun and popular pantomime. This year, it's **Snow White**. The **November** shows take place on **28th, 29th and 30th**, at **2.30pm** and **7.30pm**. Look on their website and the Fieldgate centre website to check times and book your tickets. The Pantomime will also be showing on **5th, 6th and 7th December**, so don't miss out!

Contact us if you need any further information about our activities or if you would like to hold your event at The Fieldgate Centre. Please visit our website or Facebook page for more information.

email: fieldgatecentre@outlook.com
www.thefieldgatecentre.co.uk

telephone 01635 298497
Facebook

Kingsclere Tennis Club



The Monday and Thursday evening club nights have now finished, but there is plenty of daylight at the weekends for social play as long as the rain keeps away! Of course, if you are at home during the day, you would be welcome to join Daphne's stalwarts on Thursday mornings from 9.30 to 11.00am (dsnook339@gmail.com).

Sadly our winning streak at the Bel & Dragon Quiz night in September came to an end! We need more quizzers for the last Tuesday in the month to bring us back to the top, so do sign up on the WhatsApp group nearer the time. All are welcome to increase our knowledge of all things both ancient and modern!

For all information and events, keep in touch through the Kingsclere Tennis WhatsApp, and there is our Facebook page:

<https://www.facebook.com/kingscleretennisclub>

Kingsclere Rugby Club

Adults Rugby: Training is held at The Fieldgate Centre every Wednesday evening 7.00 – 9.00 pm. If you fancy playing why not come and join us. We won our first league game of the season against Winchester Knights away 14 – 40 on Saturday 4th October. The man of the match was Ellis Springer. The next home game will be a league fixture against Farnborough 2nds on **22nd November**, kick off **2.30 pm**.



Women's Walking Rugby: You can either come along on a Wednesday evening and join the men for a mixed game or on a Thursday evening for a women's only game at The Fieldgate Centre 7.00 - 8.00 pm. Contact Joanna Reed – Moreton Secretary-Kingsclererc@outlook.com, or Geoff Curtis Youth-coach-Kingsclererc@outlook.com for more information.

Walking Rugby: On 20th September the club played in walking rugby festival hosted by Thatcham RFC. The other clubs which participated were Gosport & Fareham, Havant, Newbury and Reading. The club fielded a mixed team. Please feel come and join us on Wednesday evenings between 7.00 – 8.00 pm.

For more information please visit our Facebook and Instagram pages.

Tickets Are On Sale NOW for Kingsclere Fireworks Festival on Saturday 8th November

Get your tickets today in person at Swan Street Stores
Gates open at 16:30 - food and drinks available
Fireworks begin at approximately 18:00
Let's come together and make this event unforgettable!

St. Michael's Hospice

Reindeer Run



Sunday 30th November 2025
Arrival 8 am, start at 9 am
Festival Place, Basingstoke

Put on your antlers and walk, dash, dance and prance
along the 3K Reindeer Run route to support your local
Hospice. For further information visit
stmichaelshospice.org.uk

Kingsclere Lawn Bowls

Kingsclere Bowls club yet again performed outstandingly this year. A great record for small club and consistent with results in previous years (not a one-off !!). Why not give us a call and have a chat about what we can offer you or pop into the clubhouse. Call **Steve Kendrew 07929876831** or **Nina Horner 07421503378** for more details.

National Competitions

Men's Top Club (national multi-discipline competition, teams of 11) - area semi-finals (last eight clubs in the whole of Hampshire & Isle of Wight)
Women's Champion of Champions (national singles for club champions) - area quarter-final.

Hampshire County Competitions

Men's 4 wood Singles - area finalist (last 16 in Hampshire)
Men's Golden Pairs (over 70's) - area finalist (last 8 in Hampshire)
Basingstoke & District (all competition finals were held at Kingsclere)
Triples League (teams of 9 forming 3x triples) - District Champions
Open 4 wood Singles - 1 finalist & 1 semi-finalist

Open Pairs - 1 semi-finalist
Open Triples - 1 quarter-finalist
Open Fours - 1 finalist

Whitchurch & District

Triples League (teams of 9 as above) - District runner-up
Open Aussie Pairs (teams of 2 with rotating positional roles within the same end) - District Champions
Open Novice Singles (new bowlers with 3yrs or less experience) - 1 finalist
Open Over 60's Singles - 1 finalist
Open Pairs - 1 semi-finalist

North Hants Womens Bowling Association

Champion of Champions (singles for club champions) - 1 quarter-finalist

Ladies Local League

Triples (teams of 9 ladies forming 3x triples) - 3rd (of 8 teams)

Kingsclere & Headley Woodlands W.I.

Kingsclere Village Club, 35 George Street



The meeting in October, attended by most of our members, was a very enjoyable afternoon. Deb Heath told us about her photography, generally around Overton. She had a tale for each photo, covering birds, insects and mammals. Such excellent photos; many have been shown on South Today.

At our next meeting on the **12th November** we will welcome Jane Burrell with a very topical subject, the War Graves Commission, which looks after war graves from all wars, not just the first and second World Wars. As usual, we meet at **1.45pm** in the **Village Club, George Street**. This promises to be a very interesting afternoon. Also, on the **24th November**, some members will be attending a **Group Craft** session at **Newtown Village Hall**.

If you want an opportunity to make new friends and hear some very interesting speakers, then the Village Club on the second Wednesday of the month is the place to be. Do come along, you will be made very welcome; have a cup of tea/coffee, biscuits and a chat with like-minded people and see what you think. Our competition letter for November is O.

Margaret Geary, President tel 01635 297197



The Kingsclere Cancer Research Odyssey Ball 2026

Tickets are now available for the Odyssey Ball, to be held on **Friday 4th September 2026 at Oakley Hall Hotel**. Once again we warmly invite our community to join us in raising as much as we can for Cancer Research UK.

“Odyssey” is defined as “a series of experiences that give knowledge or understanding; a long journey” and as a title perfectly underpins our belief in the scientific quest that is advancement in cancer care and better outcomes for those affected. The evening will include a champagne reception, three-course meal, guest speakers, silent auction, casino and disco. Tickets cost £90 per head, and can be paid in two installments. Tickets are available on the website or via the QR code below. We’d love the whole village behind us and are planning other opportunities to show support, including sponsorship, auction prize donation, a coffee morning and your loved one’s name up in lights. Details to follow!



Beccy, Claire, Mandy and Sean
<https://kingsclerecrf.org.uk/>
Call Sean: **07787 527326**



Kingsclere Community Library



HOURS Tuesday & Thursday 1.00pm - 5.30pm
Saturday 10.00am - 1.00pm

Visit from the Cubs

We are delighted that the Cubs are going to be visiting the library on the evening of Wednesday 12th November to have a look around, do some reading and learn more about their local library. If there are any more groups in the village who would like to arrange a library visit, we will be only too pleased to organise that for them.

Storytime

Don't forget Storytime in the library – stories and songs for children of all ages - the dates for November are **Thursday 20th** and **Thursday 27th at 2.30pm** - so come along and join the fun.

...Just a Reminder!

As well as a selection of fiction, non-fiction, large print and children's books, you can also borrow jigsaw puzzles, use free WiFi, make photocopies, use the public computer and use our WHICH subscription to research virtually anything. And it's all FREE. So, pay us a visit, sign up, borrow some books or volunteer to help keep the doors open.

Nicki Lee, kingsclerelibrary@gmail.com www.kingsclerelibrary.co.uk
Library phone number: 01635 297464



Kingsclere Outreach

We're excited to announce that Citizens Advice Tadley & District will be opening a centre in Kingsclere, in partnership with Kingsclere Village Club.

Whether you're worried about money, housing, benefits, work, or something else entirely, our trained advisers can help you understand your options and find a way forward. We're an independent charity, so everything is free, confidential, and completely impartial — no judgment, just practical support.

Sessions will be held on the **1st and 3rd Tuesday of each month at Kingsclere Village Club, 35 George Street, RG20 5NH from 10am to 1pm, starting 4th November 2025**. To avoid any delays, we can make appointments - just contact us using the details below and we can book a suitable time.

Alternatively, just pop in, have a chat, and see how we can help. Sometimes a bit of friendly advice can make all the difference. If you do drop in, please be aware that you may have to wait for an adviser to be available.

Phone: **0808 278 7987** (including a voicemail service)
Online: <https://www.catadley.org/email>.

A Concert of the Highlights of Handel's Messiah

Led by the brilliant professional Celestia Music singers,
supported by our "People's Choir" comprising local people.

Saturday 29th November at 7:00pm
St Paul's Church, Ashford Hill, RG19 8AZ

Tickets: £30 pp for seats in the central nave, or
£15 pp for seats in the two side aisles of the church.
Drinks and canapes will be served to all during the interval.

Go to our sign-up page to book your tickets, using either the
link below or the QR code:

<https://parishofashfordhillwithheadley.churchsuite.com/events/8zy1hnlf>



Alternatively contact Patrick Taylor by text to **07584 322832** or by email
patrick@pitthousefarm.com asking me to send an invitation by email.

This event is kindly sponsored by RBC Brewin Dolphin, Tayabali and
White, Morse Webb and Hampshire Community Broadband.

KPC Kingsclere PHOTO Club

EXHIBITION RESULTS

Thank you to everyone who saw our recent exhibition, we hope you enjoyed
the show!

The Favourite Picture as voted by everyone was G4 'Skjeret Island' (Norway)
by Chris Brown, congratulations Chris.

The Favourite Panel as voted by members was Panel C (trees in black & white)
by Paul Enters, well done Paul.



2026 CALENDARS

Our super 2025 calendars are on sale, available
while stocks last @ just £7 from Swan Street
Stores.

They also make ideal Christmas gifts!

FORTHCOMING MEETINGS

At the **Village Club (Main Hall), George Street**, doors open **7.15pm** for
7.45pm start:

Weds 5th Nov

PechaKucha slide-show presentations.

Weds 3rd Dec

AGM, social and 'Print of the Year' competition

For more club information, see our website www.kingsclerephoto.org or
email us at kingsclerephotoclub@gmail.com.

The Church Pages



Hi,

I was reading recently about how we're surreptitiously formed by the
environment around us, almost without even recognising that it's happening.
An Australian pastor living in New York City described how his friends back
home noticed a drastic change in his character when he visited after several
years away. When they asked him what had happened, he replied, "New York
happened". The article pointed out that studies prove that after living in the city
for more than nine months, people actually walk faster than they did before!

What is shaping *you* today? None of us lives in a vacuum. Our relationships,
our upbringing, stuff that happens to us over time, our daily habits, and many
other factors, all play a part in making us who we are. Take a moment – right
now. Put the magazine down and sit quietly for a minute. Take some deep
breaths. Now imagine yourself in twenty or thirty years' time. What kind of
person do you see? Who are *you* becoming? Are you anxious or irritable, rather
than joyful and peaceful? Do you need to make a few adjustments? As a
Christian, I'm trying to be more like Jesus. To see with His compassion, to love
unconditionally, to forgive quickly, to walk with integrity. I'm a work-in-
progress! I have good days, and I have bad days. But deep down, I know what
I aspire to. Do you? The apostle Paul wrote, "*Do not conform to the pattern of
the world, but be transformed by the renewing of your mind*" (Romans 12:2).
He's pointing out what the Australian pastor had experienced, that if we're not
careful we'll be unintentionally conformed to the world around us. But he also
shows us that we have a choice. We can think differently (re-newed thoughts)
and get a different outcome. We can be intentionally formed by some
deliberate choices. Two simple areas we can pick on are our habits and our
relationships.

What habits do you keep in your daily and weekly life? How might they be
shaping you? Do you put the news on first thing in the morning, and get
anxious or angry at what you see? Could you look at something different, that
would set your day up in a more positive way? Old habits are hard to break; on
average they take 66 days to change. The good news is that once replaced by a
better habit, new ones become hard to break themselves.

And what relationships shape you in a way that you don't like? Studies show
that we become most like the people we spend most time with. Again, we have
a choice. We can choose to be around people who encourage us, speak
positively over us, and champion us – even if that's by listening to a particular
podcast!

You can be transformed, or you will be conformed. There's no option C. Who
do *you* want to become?

Bless you,

Pete

Rev. Pete Williams

St Mary's Church

Worship in our Churches

November 2025



Sun 2nd	9:00 am Traditional Holy Communion 9:30 am BCP Holy Communion 10:30 am Contemporary Holy Communion 4:00 pm All Souls' Remembering Service	St Mary's, Kingsclere St. Peter's, Headley St Mary's, Kingsclere St Mary's, Kingsclere
Thur 6th	10.30am Traditional Morning Worship	St Mary's, Kingsclere
Sun 9th	9.30am Bubble Church 10.50am Remembrance Service 11.00am Act of Remembrance at memorial followed by Remembrance Service 3.00pm Remembrance Service	St Paul's, Ashford Hill St Paul's, Ashford Hill St Mary's, Kingsclere St Peter's, Headley
Thur 13th	10.30am Traditional Holy Communion	St Mary's, Kingsclere
Sun 16th	9.00am Traditional Holy Communion 9.30am Traditional Morning Worship 10.30am Contemporary Holy Communion	St Mary's, Kingsclere St Paul's, Ashford Hill St Mary's, Kingsclere
Thur 20th	10.30am Traditional Morning Worship	St Mary's, Kingsclere
Sun 23rd	9.00am Traditional Morning Worship 10.30am Traditional Holy Communion 10.30am Contemporary Morning Worship	St Mary's, Kingsclere St Paul's, Ashford Hill St Mary's, Kingsclere
Thur 27th	10.30am Traditional Morning Worship	St Mary's, Kingsclere
Sun 30th	10.00am Holy Communion	St Mary's, Kingsclere

www.clerewoodlands.org.uk

Kingsclere Methodist Church

Services for November 2025

Sun 2nd	Mrs Hazel Barker
Sun 9th	Joint service at St Mary's Church for Remembrance Day
Sun 16th	Mr Terry Rowell
Sun 23rd	Mrs Helen Watson
Sun 30th	Mrs Alyson Read

All services begin at 10am unless otherwise stated

Coffee Morning every **Thursday 10.30 until 12 noon**, all are welcome.

Hall available for hire (see Directory on Page 24)

Christine Westcombe email c_westcombe@hotmail.com

Lighting up St Mary's

The sight of St Mary's Church when it is floodlit is truly beautiful. Many people sponsor these lights (£15 per evening) to mark an occasion, such as a birthday, wedding, anniversary, or some other special day in their lives. To book, please email administrator@stmaryskingsclere.co.uk or call **01635 299528**. To include your tribute in the Tower, please let us have your words before the 12th of the preceding month.



November

20th In Loving Memory of John Miles on World Pancreatic Cancer Day with all our love from Kate, Maddy, Sam, Nik, Phil and families

30th Rod Eldred. Loved and so missed. Diana

Saturday Coffee in the Kingsmill Room, St Mary's Church

Fresh brewed coffee, tea and delicious home-made cakes.

November 1st, 8th, 15th and 22nd 10.00-12.00

If you're looking for great company,
we'd love you to join us for a cuppa and a natter!

For more info, please contact the church office on: **01635 299528**

Sandham Memorial Chapel, Burghclere

We Will Remember Them

Join us for a Service of Remembrance at Sandham Memorial Chapel on **11th November at 10.50 am**. The service will be led by Padre Mark, a volunteer at the Chapel, and takes place in the Chapel Garden where a sea of poppies created by volunteers will be draped over the wellhead, symbolising remembrance and hope for peace.

Sandham Memorial Chapel is one of the few National Trust properties dedicated to the First World War, and the only one in this country that commemorates the Salonika Campaign. We are honoured to be joined by members of the Salonika Campaign Society, whose work is dedicated to preserving the memory of the campaign and the soldiers who endured the hardships of the Balkans between 1915 and 1918.

This year's Service of Remembrance promises to be a moving tribute – honouring sacrifice, preserving memory, and renewing hope for a peaceful future.

This event is free, but please bring your NT card if you have one.

Follow us on [@ntsandham](https://www.facebook.com/ntsandham)

Friends of St Mary's Kingsclere Ltd (FOSM)

Our AGM will be held in the **Kingsmill Room**, at **7pm** on **Wednesday 19th November**. All Friends and anyone interested in joining are welcome to join us. After the business of the evening there will be a short talk by Gareth Martin about Kingsclere during WW2 over a glass of wine.

Our next event will be another Staycation, this time to Cornwall, at the **Fieldgate Centre** on the afternoon of **Saturday 15th November**. These events are great fun; please see the advert on Page 15 (opposite) for more details.

Looking ahead, our Quiz Night with Ploughman's Supper at the Fieldgate Centre will be on the evening of 6th February. For the last several years this has been a complete sell out, so look to book up early when tickets are available from Raj and Monika early in January!

We also have a date, Saturday 30th May, for the annual Plant Sale in St Mary's Churchyard and, as ever, would welcome plant donations from any of you who are splitting perennials or sowing early in spring.

Peter Turner, Chairman

Website: friendsofstmaryskingsclere.org

For membership and other enquiries contact: fosmkingsclere@gmail.com

Kingsclere Royal British Legion (RBL) & Poppy Appeal

Thank you all for your support in the lead up to Remembrance. We will share soon how much has been raised across the district. As always, the RBL and the Poppy Appeal deeply appreciate your continued support during this time and throughout the year.



We look forward to seeing you on **9th November** when the village will gather at the memorial to remember those who have fallen in service to our Country. Community organisations will once again parade through Swan Street to the memorial for the service and the laying of wreaths. If you wish to lay a wreath, please feel free to do so on the day, or contact us at the email below to arrange in advance. We ask that you are in place for **10.45 am**.

The Branch meets on the first Tuesday of each month at 7pm in the Kingsmill Room, St Mary's Church. New members and visitors are very welcome. Our **AGM** will be held on **2nd December**, an excellent opportunity to come along and meet us. We are also seeking a new Secretary and Treasurer.

Without volunteers or members, we would be unable to maintain a Branch in the village, which would mean no Remembrance Services and the Poppy Appeal would also be at risk. Even a couple of hours of your time can make a real difference. If you can help, we would love to hear from you. Thank you.

Contact: Kingsclere.Chairman@rbl.community
Chairman, Kingsclere Royal British Legion

FRIENDS OF ST. MARY'S 'STAYCATION' TO CORNWALL

Saturday 15th November 2025
Fieldgate Centre 12 noon until 3pm

We have arranged another 'Staycation' – this time we shall 'travel' to Cornwall and be entertained by The Kings Pond Shantymen.

kingspondshantymen.org.uk

A hearty Cornish lunch of pasty, scones and a cup of tea will be served. All-inclusive tickets £15 each. *Special diets can be catered for if notified well in advance.*

Please feel free to 'dress to impress'. We need Fishermen, Pirates, Artists, etc. So – dig out your Sou'westers and come along to join in the fun.

Numbers limited so book early to avoid disappointment.

Book your tickets from:

Pam or Andrew Kitch **01635 299743** or **07425 126427**

or email: pamkitch16@gmail.com

Kingsclere Gardening Association Kingsclere Gardening Association

The association enjoyed an evening with Michael Radley who spoke about the history and legacy of Sanders and Co Orchid Nursery. A fascinating account of how orchids were prized in the eighteen hundreds, and to the amazing efforts that explorers went to find these exotic plants. Although the nursery no longer exists, many books etc were written by the owner.

We are looking forward to our social event, which is a lunch that is replacing our annual evening meal at a local venue.

The next meeting will be **November 13th** at the **Village Club**, commencing at **7:30 pm**. The speaker for the evening will be Mr. Anthony Powell, and his subject will be 'Autumn Colour', very appropriate for this time of year. This month, the table top competition consists of a pair of vegetables, a vase of flowers one kind or mixed, plus four other classes mentioned on the membership card.

A reminder of our RHS membership, that enables us to have a card that members can use to enter any of the RHS gardens.

We look forward to welcoming members and guest to our next meeting.

Denise Allen Chairman 01635297966 denise.allen47@icloud.com



KINGSCLERE VILLAGE CLUB

Est. 1921 CHARITY 1189234

<http://www.kingsclerevillageclub.co.uk>

<https://www.facebook.com/kingsclerevillageclub>

Follow us on Instagram @kingsclere_village_club

Christmas Market

Sunday 7th December, 10am to 1pm.

Beautiful jewellery, all sorts of Christmas decorations and crafts, etched glass, local honey, wool craft, wildlife photography, feather wreaths, wood craft, handmade fragrance, hair & body products, resin & clay, fabric work, crochet, children's pocket money toys, children's lucky dip – the list goes on and on! Plus



Children's Photography: A portrait of your child from local photographer Rachel (Isola Photography) would be an ideal gift for grandparents.

Free entry - not to be missed!

Community Cafe



The November Community Cafe is on **Saturday 29th 10am to 12.30pm**. Come along for a cuppa, homemade cake and a friendly chat. With a free, fun quiz at 11 o'clock. No need to worry about coming on your own - there is sure to be a group that will welcome your help!

Lights & Lanterns

This lovely, free event lifts the post-Christmas gloom. On Saturday 31st January, 5.30 to 7.30pm. More details in the next Tower.

A plea to fellow event organisers

There is a lot going on in the village with many active groups putting on events. Please, please use the Parish Council's community calendar both to check there won't be a clash and to let everyone else know about your event. And a big Thank You to those that do!

Helen 01635 297390 or events@kingsclerevillageclub.co.uk

FOSM200 Club

The winner of the September Draw was Norma Absolom – No. 33
Congratulations, Norma

Next month's Draw will take place at Bel & the Dragon at about 7pm on
Tuesday 4th November

Kingsclere Village Bunnies Baby & Toddler Group

Where: The Village Club, George St

When: Tuesdays, 9:00am – 11:00am

Cost: £2.50 for 1st child (including snack for child and hot drink and biscuit for adult), 50p per extra child, £1 per extra adult



We are a friendly group of parents, grandparents and childminders with children from tiny babies to energetic toddlers! We love welcoming new visitors to our play sessions. We enjoy outdoor and indoor play, craft, toys and singing together.

The Bunnies had a great time at our Halloween Party last month!

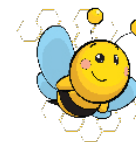
The library will be opening especially for Bunnies on 4th November.

Thank you as always to Swan Street Stores for their continued support of a weekly donation of fresh fruit snacks for the Bunnies.

For information visit our Facebook page, or regular visitors can join our WhatsApp group for weekly updates.

Lydia Harley-Tomlinson lydia.harleytomlinson@gmail.com

Kingsclere Pre-School



The children liked learning about the farm and climbing aboard the tractor. They have also been helping in the garden to collect the fallen leaves and acorns. Later this term, the children will be participating with Occupation Week where we have planned visits from people in the community and will be learning all about different job roles.

We have childcare spaces available! If you are looking for a childcare space, or ways you can support the Preschool, please contact: admin@kingsclerepreschool.co.uk or visit: www.kingsclerepreschool.co.uk

Kingsclere Preschool Needs Trustees!

Kingsclere Preschool is a charity run by a volunteer committee, but our trustee numbers are declining. We're looking for new volunteers to help keep this vital part of our village thriving. You don't need any prior connection to the preschool - just a DBS check (covered by us) and a few hours each month for meetings and follow-ups. Without trustees, the preschool can't operate. If you're interested, email: committee@kingsclerepreschool.co.uk to learn more.

Kingsclere CE Primary School



It's been a busy and rewarding half term, full of learning and community spirit.

We celebrated our Harvest Festival at St Mary's Church, where the children performed with great confidence to a super congregation of family and friends. The children shared Harvest poems, a rap and prayers, while Year 5 and 6 impressed us with their geographical enquiry work exploring, 'Is there enough for everyone in the world?' Despite the rain on the walk to church, spirits remained high! We were also very grateful for the many generous donations children made to the West Berkshire Foodbank. Thank you to all families for their kindness.

Back at school, our roof works project is nearly complete. We are delighted to have a new roof and are looking forward to the scaffolding coming down soon - it will be lovely for the school to no longer look like a building site!

We have also started welcoming prospective parents to our Open Day tours whose children start Reception in September 2026. The Open Days are a great opportunity to see the school in action and learn more about life at Kingsclere CE Primary School. If you'd like to join us, please contact the school office on **01635 298583** or email adminoffice@kingsclere.hants.sch.uk.

Our next Open Days are:

Friday 7th November 2025, 09:30 – 11:00
Tuesday 18th November 2025, 13:30 – 15:00

We are delighted to welcome our new PTA Chair, Miss Kim Dumelow, Vice Chair, Mrs Emma Evans, and our new Co-Chairs of Governors, Mrs Claire Harris and Mr Ian Bowes. We are very grateful to all our volunteers and would like to extend special thanks to Mrs Sue Watson, who has stepped down as Chair of Governors but remains on the governing body, and to Dr Kerry McLaughlin, who has stepped down as Vice Chair and from the governing body. We also thank Mrs Beccy Preston, our previous PTA Chair, and Mrs Claire Ellis, our former PTA Secretary, for their fantastic contributions. To all these volunteers who have committed so many hours to the school, we want to express our heartfelt thanks. Their time, energy, and dedication have had a great impact on our school and our school community, and we are incredibly grateful for the kindness, care, and support they have shown to the children, staff, and families of Kingsclere CE Primary School.

This term, the Revd Canon Dodie Marsden has travelled to visit our partner school, Kyankowe, in Uganda. Before she left, our children rewrote some of Aesop's Fables for her to share with the pupils there. We are eagerly awaiting her return and cannot wait to hear some traditional Ugandan stories in exchange!

Jo Messenger, Headteacher

What's on at Shipinnarts

The Ship Inn Country Hotel, Ashford Hill, RG19 8BD
 Tel: **01189 814504** Website: <https://shipinnarts.org/>
 Email: shipinnarts@gmail.com



Carols and Crafts at Shipinnarts Sunday 30th November 2 – 4pm

This is a public event. Come along and get into the Christmas spirit! Christmassy crafts, sing carols and listen to music. Sweet refreshments provided and hot and cold drinks. The Christmas trees will be up! It will be such fun! Tickets £12 from Eventbrite:

<https://www.eventbrite.co.uk/e/carols-and-crafts-tickets-1634864045369>

Alternatively, you can ring **01189 814504**; leave a message with your name, how many are coming with you and pay on the door on the day (cash please).

Kingsclere Singers

Christmas is just around the corner, so get these dates in your diary. That way you will not miss them on the run up to the big day.

14th December Yule Sing at St Mary's Church, Kingsclere.
 Please be seated at 4pm

19th December Community Singalong at the Fieldgate Centre, Kingsclere. Please be seated at 7:30pm.

Basingstoke Choral Society An Evening with Brahms: German Requiem & Song of Destiny

Saturday 22nd November 2025
Pre-concert Talk at 6.30 pm, Concert starts at 7:30 pm
The Anvil Basingstoke

Conductor: Jordan Theis Orchestra: The Docklands Sinfonia
 Soprano: Sofia Ticciati Baritone: Ross Cummings

Brahms wrote numerous works, but his German Requiem is the only one for a large scale choir. The beautiful fourth movement – How Lovely are Thy Dwellings, will be particularly familiar as it is often performed as a single piece in its own right. Schicksalsleid, The Song of Destiny, is a setting of a poem by Friedrich Holderlin and along with The German requiem is considered to be one of Brahms best choral works.

To book: <https://www.anvilarts.org.uk/events/basingstoke-choral-society>

November in the Garden

We have had an amazing October in the garden; dahlias and Michaelmas daisies have excelled themselves. After the dry and hot summer, it has been a delight to see the trees turn to such wonderful colours, almost unexpected as many of the trees were losing leaves in the summer from lack of rain. How lovely it would be if we could keep some of that colour into November. Unfortunately, colder weather will remind us winter is looming, and there is still plenty to keep us busy in the garden, and less daylight to do those jobs, most days getting dark by 4 o'clock.

In the vegetable garden cabbages, carrots, cauliflowers, kale, leeks, parsnips, spinach and brussels sprouts will be ready to harvest. Hardy peas and hardy broad beans can be sown under cloches and salad leaves can be grown on well lit windowsills.

In the flower garden and borders plant bare-rooted roses and trees, digging a nice deep hole and leaving the graft just below the level of the soil. Plant winter flowering heathers, winter pansies, tulip bulbs and new perennials. Lift dahlias if you haven't already done so. Take hardwood cuttings of shrubs. There is still time to prune apple and pear trees, cutting away crossed branches to keep the centre of the tree open.

There could still be a chance that the lawns could be cut before the winter sets in if conditions allow. Keep clearing any fallen leaves from the grass as this will cause the grass to turn yellow if left, and will also encourage undesirable insects.

Some large planted up pots maybe too large to lift into the greenhouse; these need to be protected from the frost, wrapping them in hessian or bubble wrap.

Before the winter arrives check any tree ties and stakes as the winter winds will cause damage, particularly to young trees, also tie in climbers. Most perennials can be cut down and divided, although some seed heads could be left for the birds and can look attractive if frosted.

There are a few plants still giving colour to the garden this month, which includes pyracantha, pansies, liriopie muscari, winter flowering honeysuckle, rose hips, and the clematis Bill MacKenzie.



Pyracantha

Denise Allen

Nature Notes

On a sunny Sunday in October, I sat in a churchyard in Newbury admiring the Chinese Lantern flowers (*Physalis alkekengi*) flanking the church entrance, like little orange paper decorations for a miniature wedding. In this gradually greying time of year, nature's bright colours seem to pop out all the more vividly. I looked around and noticed the red berries of the yew trees, winking their single eyes out from the dark green branches. Their shape has always reminded me of both olives and the wooden beads that toddlers practise threading through.

However, these are not actually berries but arils – a fleshy protective covering wrapped around the yew seed. The bright scarlet colour is designed to attract wildlife to eat the arils and distribute the seed. Unlike the yew's bark and leaves, the aril does not contain deadly toxins, so birds, squirrels, mice and other woodland creatures nibble the aril down as far as they can but avoid eating the seed which is also highly poisonous. Amazingly, badgers have mastered ingesting the seed but passing it through their system without disrupting the poison – leaving the seeds undigested in their poo.



Yew trees (*Taxus Baccata*) are dioecious, meaning the plants are either male or female, and they fertilise each other to reproduce. Only female yews produce arils, though, incredibly, yews have been known to change sex in order to survive in challenging conditions. Perhaps this ability to change fundamental characteristics - a type of rebirth - is a link to the ancient, pre-Christian association of yews with the afterlife?

A wonderful advantage of dusk creeping ever earlier has been the opportunity to see bats careering in zigzags around our garden, and in several places around the village. Usually eating mid-flight, they burn calories quickly, and to power their acrobatic manoeuvres common pipistrelle bats can eat up to 3,000 insects a night.

Lydia Harley-Tomlinson

lydia.harleytomlinson@gmail.com

St Mary's Church will be lit up on 31st October and 1st November to welcome our guests from Cormicy.



Kingsclere Players are excited to present their enchanting production of **Snow White** by Alex Jackson at the **Fieldgate Centre, Kingsclere**. Join us for magical performances

Friday 28th, Saturday 29th and Sunday 30th November
Friday 5th, Saturday 6th and Sunday 7th December
 Matinee and evening shows, with start times at 2.30pm and 7.30pm
 Tickets start from just £7.50.

For more information on performance schedules, ticket prices, and booking options, please visit TicketSource, the Fieldgate Centre, or our website at www.kingsclereplayersgroup.com
 Don't miss this fairy-tale adventure — tickets on sale **NOW**



Kingsclere Craft Club Craft Fair In Aid Of St. Michael's Hospice

Our Craft Fair on Saturday 27th September was a huge success. We raised a whopping £3,050.00 for St. Michael's Hospice. We could not have achieved this figure without the support of our donors and the wider community.

Many thanks to all of the local businesses and organisations who supported us by donating Raffle prizes and to all of you who attended the fair, purchased raffle tickets and helped set-up and clear away afterwards. A true village effort - something that Kingsclere is so good at.

My personal thanks go to all the members of our Craft Club, their partners and families who worked tirelessly for a year before the event and on the day.

Pam Kitch

Burghclere Baroque presents
A French Baroque Christmas
Music by Marc-Antoine Charpentier
Messe de Minuit
In Nativitatem
Singers and players of Burghclere Baroque Ensemble
Soloists: Philippa Hyde, Matthew Keighley, Robin Datta, Dominic Felts
Directed from the organ by Robert Howarth
Friday 19th December 7.30pm, Church of the Ascension, Burghclere
Tickets £10 - £25 at your discretion, under-18s free
Includes a glass of wine or soft drink
 Box office - email theresa@burghclerebaroque.com **01635 276009**
 Further details at www.burghclerebaroque.com
 This concert is supported by The Greenham Trust



info@whitchurchsilkmill.org.uk
 Tel: 01256 892065
www.whitchurchsilkmill.org.uk

Christmas at the Mill Shop

Our shop offers beautiful gifts across all price ranges, including items made from our own silk. Silk scarves make luxurious presents, while our silk-covered A5 notebooks are ideal for journaling, planning or sketching.

Give the gift of creativity with one of our hands-on workshops. Suitable for beginners and experienced crafters, they offer a chance to learn new skills and be inspired. Gift cards are available and can be used for workshops, shop purchases or café treats. If dates don't suit, contact us to explore alternatives.

Upcoming Workshops

Weave a Wall Hanging, 6th Nov, 10am or 2pm: Learn weaving techniques on Louet tabletop looms and create a wall hanging. Small group tuition. £60 pp.

Beginners Braiding, 15th November, 11am – 1pm: Discover Japanese kumihimo braiding. All materials provided. £35 pp.

Two-day Weaving Course, 28 – 29th November, 10.30am – 4pm: Learn the full weaving process with our silk weavers and take home a finished piece. £150 pp.

Behind the Scenes & Talks

Silk Production Tour, 4th Nov, 11am – 12pm: Go behind the scenes of Victorian silk production. Watch looms in action and hear stories from past and present weavers. £25 pp.

Dark Satanic Mills or Grim Reality?, 11th Nov, 7 – 8.30pm: Historian Dr Richard Marks explores Victorian factory life and the rise of trade unions. £15 pp. Doors open at 6.30pm. Tea/coffee available for a donation.

Festive Family Fun

Elf on a Shelf Trail, 6th December, 10.30am – 12pm & 1.30 – 3pm: Follow the festive trail, enjoy activities and collect a chocolate reward. £6 per child, includes trail sheet, elf ears and treat bag (dairy or 'Free From' options).

WOLVERTON MARKET

The next Market will be on **Saturday 1st November** in the **Village Hall**, open from **9.30am until 11am** and admission is free. Refreshments are available to enjoy while you shop. Come and browse for possible Christmas gifts and stocking fillers. Stalls will be selling eggs, honey, wood carved items, greeting cards, jewellery, decorated candles and various other lovely craft items. Also lots of bric-a-brac to rummage through for that elusive bargain! We look forward to seeing you and as always, thank you for your support.

Wendy Morgan 01635 297538

THE KINGSCLERE TOWER DIRECTORY

POLICE, FIRE or AMBULANCE

Police Enquiries/Information

Emergency 999

non Emergency 101

Kingsclere Health Centre:

0333 034 1033

North Hampshire Hospital, Basingstoke

01256 473202

Parish Council: 37 George Street (see page 2)

01635 298634

Kingsclere Charities Clerk: Gillian Hern

07884 182696

kingsclerecharities4@mail.com

Dial-a-Ride

01256 462101

CHURCH CONTACTS

St. MARY'S CHURCH:

Vicar Peter Williams vicar@stmaryskingsclere.co.uk

Church Warden:

John Price johnsaprice@hotmail.com

01635297780

Administrator:

Natalie Follett

01635 299528

administrator@stmaryskingsclere.co.uk

07422 687125

METHODIST CHURCH:

Minister: Rev Rachel Borgars

07889 905753

Rachel.Borgars@methodist.org.uk

01256 895878

Secretary & Hire of Hall Jeanette Billington

01635 297585

ROMAN CATHOLIC:

Rev Patrick Tansey

0118 9814572

tdley@portsmouthdiocese.org.uk

Bas & Deane

01256 844844

Swan Street P O

01635291923

Buses

0345 8101000

Kingsclere Vets

01635 896330

Trains

0845 748 4950

Dentist

01635 299981

Gas Emerg.

0800 111999

Age Concern Local Agent 08003287154

Chemist

01635 298419

Berkshire Vets

01635 896333

Kingsclere Library

01635 297464

BOROUGH COUNCILLORS

David Conquest 07887 871105

Cllr.David.Conquest@basingstoke.gov.uk

Mike Bound 07833 612735

Cllr.Mike.Bound@basingstoke.gov.uk

Kerry Morrow 07725 819021

Cllr.Kerry.Morrow@basingstoke.gov.uk

COUNTY COUNCILLOR

Tom Thacker 07712695468

tom.thacker@hants.gov.uk

MP for N.W. Hampshire:

Kit Malthouse 01264401401

kit.malthouse.mp@parliament.uk

2, Church Close, Andover, SP10 1DP

There is a more comprehensive list of local contact numbers on the Parish Council website. Go to www.kingsclere-pc.org.uk/directory