

The Kingsclere Tower



FROM THE PEOPLE OF
KINGSCLERE



IN GRATEFUL AND HEARTFELT
THANKS FOR YOUR SERVICES
DURING THE WAR YEARS
1939-1945



What's On & Local News
MAY 2025

The Kingsclere Tower

EDITORIAL TEAM: Mike Stokoe, Stephen Steare, Steven Gaines, Cathy Williams
 ADVERTISING: Brian Elborn b.elborn345@btinternet.com tel 298704
 DISTRIBUTION: Brian Elborn tel 298704
 ASSEMBLY: Andrew Kitch tel 299743
 PRINTERS: Kingsclere Design and Print
 COVER: Gareth Martin

We celebrate the end of WW2 in Europe this month. The older members of our community may remember the war, others, like myself, remember our parents recalling the sight of bombed out cities and the privations of rationing. Many people do not realise how involved villagers were in civil defence. We think of the Home Guard generally in terms of the TV series "Dad's Army", a comical band of poorly equipped retirees. The truth is that there was a detailed system of organised groups to support the community in case of invasion, which was a very real expectation after the fall of France. Over two hundred people were organised, in this village, to help refugees, feed and house people who lost their homes, and look after the injured.

So not only should we remember the brave men and women who fought for us but also the many who stood ready to "do their bit" for King and Country.

To commemorate VE Day, the Village Club and the Local History Association are holding a Tea Party and Exhibition on Sunday 11th May with pictures and details of wartime in Kingsclere.

STOP PRESS: The Village Fete will be held on 25th August. Details inside.

The Editor

Neither the Editors nor the Management Committee accept responsibility for the opinions expressed or the goods and services advertised in the Kingsclere Tower magazine. The Editors reserve the right to omit, amend, or condense any item submitted for publication.

To all "Tower" Contributors

**Copy for June 2025 to the Editor at: kingscleretower@gmail.com
 NOT LATER THAN 12th May 2025.**

If possible please submit articles as a MS Word document, A5 page size, font Times New Roman 11, single spacing. *If email not possible, post to:*
 23 Swan Street, Kingsclere, Newbury RG20 5PP.

**Will ALL contributors please include full name
 and contact phone number/email address.**

Kingsclere Parish Council

Email: clerk@kingsclere-pc.org.uk

Telephone: 01635 298634

Office: 37 George St, Kingsclere RG20 5NH

Website: <https://www.kingsclere-pc.org.uk/>



DOG FOULING SPORTS PITCHES AND RECREATION GROUND –

This is still a reoccurring problem around the Village particularly the Recreation Ground, the Holding Field and the Fieldgate sports pitches. Extra patrols are taking place by our local Community Safety Patrol Officers, and they have the means to issue **Fixed Penalty Notices** to anyone not carrying dog waste collection bags or committing the offence of not clearing up after their pet.

VANDALISM IN THE MALTHOUSE OPEN SPACE – Sadly the bench was broken at the beginning of April and again the bin was thrown into the stream along with the board from the bench. Please do keep an eye out whilst walking around our village and report anything or anyone carrying out damage and vandalism such as this.

BBQs - A portable BBQ has damaged the grass on the Holding Field. Do remind your families of the dangers of placing BBQs on to grass.

LIME TREES IN CHURCHYARD - Disappointing to see that some of the Lime Trees in the Churchyard have been cut back. No authorisation was given by the Church or the Parish Council to work on the trees, and no permission was sought from BDBC. These trees are in the Conservation Area. The matter is being dealt with by Basingstoke and Deane.

THE ANNUAL PARISH MEETING was held on the 17th March. There was a good turnout of residents, and we hope everyone enjoyed the meeting. The Making a Difference Awards for 2025 were officially opened for nominations. The relevant form is on the website or available from the office.

ANNUAL SPRING CLEAN – 21 volunteers turned up for the Village Spring Clean day on the 29th March. We collected over 25 bags of rubbish from areas not usually covered by our amazing litter warden. KPC thanks everyone for their time and effort. It was a fantastic morning! Thanks to Sam for providing First Aid cover, to St Mary's for the loan of the tables and chairs, and to Swan Street Stores for the loan of additional Hi-Viz.

HAMPSHIRE HOPPIT TRAIL RACE - is scheduled for Sunday 15th June. Any surplus funds generated will go to the Hampshire and Isle of Wight Air Ambulance. There will be a managed road crossing on the B3051 by the 40mph speed sign. All welcome.

GREEN WHEELY BINS & GLASS RECYCLING – the collections dates are Wednesday 14th and 28th May and 11th June.

NEXT PARISH COUNCIL MEETING – The next Full Council Meeting is scheduled for 7:30pm on Monday 19th May 2025. This Full Council Meeting will follow the Council Annual Meeting in the Village Club. We welcome the attendance of all parishioners at our meetings and anyone who wishes to raise any matters will be given the opportunity to do so during Public Questions.

Kingsclere Charities

Kingsclere Almshouse Charity aims to provide accommodations to local residents facing hardships. We have a **Vacancy** at the **Durbridge Almshouses** on Galley Lane, Headley. Local residents from Kingsclere and Ashford Hill with Headley areas can apply. Whilst we have an on-site warden all applicants must be able to live independently and should an applicant become a resident, they will be required to make a weekly maintenance contribution to the charity. For further information or an application form please contact Gill Hern (see below).

The Robert Higham Apprenticing Charity This Charity promotes education (primary and pre- school) and training of young people (aged 16 – 25) resident in the Parish of Kingsclere and Ashford Hill with Headley. Grants are awarded to assist with the cost of: equipment, books and specialist clothing for training in a stated subject and expenses incurred in travelling to and from home to a place of learning.

Welfare Charity This Charity helps resident in the Parish of Kingsclere and Ashford Hill with Headley regardless of age or means. Grants have been given towards mobility aids, medical equipment and travel costs to and from hospital.

2025 Meeting Dates: Jun 19th, Sep 18th and Nov 20th

Gill Hern, Clerk kingsclerecharities4@mail.com 07884 182696

Basingstoke & Deane Borough Council



New 'drop ins' to bring sustainability

These 'pop ups' at community centres and halls are a new initiative by Basingstoke and Deane Borough Council's Green Team. People who pop in will get free advice on how to save money and cut carbon by living in a more planet friendly way. They will also be able to take part in interactive workshops led by specialists on topics like eco-friendly gardening, building bug hotels and upcycling waste into arts and crafts, among others.

Upcoming 'drop ins' with the Green Team can be found at:

www.basingstoke.gov.uk/green-team



Covid Vaccine Programme

The NHS national booking system is open for spring Covid-19 vaccination bookings for those eligible until 17th June 2025. Eligibility is similar to previous years but those with a weakened immune system are now eligible from 6 months instead of 5 years. This Spring's eligible cohorts include:

- e Adults aged 75 years and over by 30th June 2024
 - e Residents in care homes for older adults
 - e Individuals aged 6 months and over who are immunosuppressed
- Anyone eligible can book a vaccine appointment via the NHS.UK website or by calling 119 for free.

Some areas also offer convenient walk-in options, with a list of available walk-in sites online. www.nhs.uk/nhs-services/vaccination-and-booking-services/find-a-walk-in-covid-19-vaccination-site

Health Kiosk at Kingsclere

Following the successful trial of a Health Kiosk at Overton Surgery, we have been successful in getting funding for a second at Kingsclere. All patients with a current registration at Watership Down Health are welcome to use either of our Health Kiosks.

The Health Kiosk is available from 8.00am in the morning to 6.20pm and is situated in the waiting rooms at Kingsclere and Overton. The Health Kiosk will record a range of information including height, weight, blood pressure as well as including a number of Health Questionnaires.

The Health Kiosk transfers any data directly into our clinical system so there is no need to hand in print outs of BPs etc. Full information and a short and long video are available on our Web Site at:

<https://watershipdownhealth.com/wellbeing/health-kiosk/>

If any queries, please message us via our Web Site. We are grateful to our Commissioners for their support with the funding of the second Health Kiosk.

Hay Fever

Hay fever is usually worse between late March and September, especially when it's warm, humid and windy. This is when the pollen count is at its highest. Community Pharmacies will be able to supply a range of 'over the counter' medicines to help manage symptoms. The NHS has helpful information at: <https://www.nhs.uk/conditions/hay-fever/>



The Fieldgate Centre is run by Kingsclere Community Association, as a charity (No 1168366). The association is made up of volunteers who rely on the support and participation of the community.

The Fieldgate Centre continues to be busy and bustling after the Easter break. There is always plenty going on with the busy programme of exercise classes, sports club matches, blood donor sessions, activities and private events. Check our website for full details and come and join us for Pilates, Clubbercise, Ceroc, Slimming World, Badminton, Darts, Monthly Meet Up and Songtree.

The new chairs are in place in the hall, and the bar furniture should be in place soon. This will tie in nicely with the **bar being open on Friday evenings** over the summer starting with **2nd, 9th, 16th, 23rd and 30th May**. Come along for a pint or two, enjoy the large space, fully stocked bar and outside area, weather permitting!

The next **Repair Café** will take place on **Sunday 11th May**, starting at **10am**. Bring along your broken household items and see if they can be repaired, and recycling boxes for numerous items including batteries and printer cartridges.

Monthly Meet Up is taking place on **Tuesday 20th May** from **2.30-4.30pm**. It's a lovely friendly afternoon of chat, cuppas, cake and activities. Everyone is welcome. Free lifts are available if needed. Please contact: fieldgatecentre@outlook.com to arrange.

Plans and preparations for the **Music Festival** on **28th June** are going strong with lots of acts already booked. Look out for further information, it's going to be a great event!

Contact us if you need any further information about our activities, or if you would like to hold your event at The Fieldgate Centre. Please visit our website or Facebook page for more information.

email: fieldgatecentre@outlook.com
www.thefieldgatecentre.co.uk

telephone **01635 298497**
Facebook

Table Top Sale

Saturday 14th June 2025 open from **11am until 2pm** to be held in **Kingsclere Methodist Church Hall**. Lots of interesting items for sale and many bargains to be had! Tea, coffee and cake will be available.

If you would be interested in hiring a table at a cost £5 please contact:

Wendy Morgan on 01635 297538

Kingsclere Rugby Club



Women's Walking Rugby – Now that the evenings are getting lighter and warmer why not join us and enjoy some camaraderie as well as exercise. You can either come along on a Wednesday evening and join the men for a mixed game or turn up on a Thursday evening for a women's only game. Both the Wednesday and Thursday evenings are held at The Fieldgate Centre between 7.00 - 8.00pm. The game is suitable for women from 18 to 70+. Walking Rugby is a very easy game to learn, no experience of rugby is needed and can be played with just 4-a-side. It's a great way to exercise, walking as fast or as slow as your body allows with low impact on all your joints, you don't need to be fit to play. The main aim is to enjoy yourself, make some new friends and get a little bit of exercise at the same time.

For more information, please contact Joanna Reed – Moreton

Secretary-Kingsclererc@outlook.com or Geoff Curtis

Youth-coach-Kingsclererc@outlook.com

Adults Rugby – The team played a return game away against Tadley Bandits on Friday evening 14th March under flood lights in a close encounter winning 27 – 24. The player of the match was Louis Coppi.

Men's Walking Rugby – Please feel come and join us on Wednesday evenings between 7.00 – 8.00 pm.

Summer Touch Tournament – This will start on Wednesday 28th May and run every Wednesday evening for 6 weeks until 3rd July. The tournament is open to males and females from 15 years old and upwards. The event will run from 7.00 – 8.30pm.

For more information visit our Facebook and Instagram pages.

Digital Copy of

The Kingsclere Tower

We offer a Subscription service free-of-charge. At the end of each month we email subscribers with a PDF version of the Tower.

Hard-copies are still delivered to all homes in the village. To subscribe please email the editors at: **kingscleretower@gmail.com** with the subject header 'Subscribe'. Such requests will be taken as consent for us to hold your name and email address for this purpose, in compliance with GDPR data regulations.

Kingsclere Tennis Club



Our Summer Season starts on 1st May so get your racquets out and head for the courts!

We are starting off the season with a repeat of our very successful **Open Day and Junior Competition on Saturday 3rd May**. There will be a junior competition for 6 to 10 year-olds from 10am to 12 noon. This will be a red ball tournament run across the 4 half courts. There will still be something for the really young kids to have a go at learning the sport.

In the afternoon from 2pm there will be 3 hour-long adult and teen sessions for a maximum of 8 people at a time. These sessions will all be run by our LTA coach Simon Parker and there will be a mix of easy drills and doubles play for all abilities. There is no charge for these sessions although a small donation towards our fundraising efforts for new courts would be hugely appreciated!

Registration for all these sessions can be found at:

<https://kingscleretennisopenday.eventbrite.co.uk>

We will also be continuing with a social tennis evening starting on Monday 19th May when all members are welcome.

For all other information: **<https://www.facebook.com/kingscleretennisclub>**



info@whitchurchsilkmill.org.uk

Tel: 01256 892065

www.whitchurchsilkmill.org.uk

Weave a Wall Hanging Workshops, 7th May 10.30am–1.30pm, 16th May 1–4pm

Suitable for beginners. There are a few places left for the two May workshops. You'll learn tips and techniques from our weaving team, with tuition in a small group to create your own patterns and textures on a Louet table-top loom. Tickets £60 per person.

A Day in the Life of a Regency Lady, 13th May, 7–8.30pm

This should prove to be a fascinating evening. Sophie Andrews will be bringing her Regency wardrobe and a selection of antique items from her collection. Bring your parasol and a picnic to celebrate with us the 250th anniversary of Jane Austen's birth and the cultural activity of Regency England. Open to pre-booked ticket holders only.

Riches to Ribbons Exhibition, until 20th July 2025

See the ribbon collection celebrating the 250th anniversary of Jane Austen's birth, woven in collaboration with Jane Austen's House in Chawton

Spring Fayre, 26th May, 10.30am–4pm

This is our first community Spring Fayre and should be a fun day out for all the family. Entry is FREE. Featured will be local food and drink suppliers seen at our past Food Festivals, a children's craft station, a performance by the ever-popular Bubbles Man, and activities such as hook a duck (not a real one!), splat the rat, tin can alley and an egg and spoon race.

Kingsclere & Headley Woodlands W.I.

Kingsclere Village Club, 35 George Street



We have had some really good speakers in the WI year of 2024/25. In April, we had a speaker new to us, Catherine Sampson, telling us of the effects of the Civil War in and around Reading. She was excellent. This was very much enjoyed by all the members. We also enjoyed our twice yearly North Downs Group meeting at Burghclere when we heard about the Pangbourne Cheese Co. (and tasted!) Very different to our usual speakers.

In May we have our Annual meeting when we review our year, confirm our committee for 2025/26, elect the president for the coming WI year and are ready to begin our new WI year with a new selection of speakers in June. The list is currently being compiled.

Our meeting is on **Wednesday, 14th May**, commencing at **1.45pm** in the **Village Club, 35 George Street**. We will have in attendance two WI members from Burghclere to act as tellers and conduct the election of the president and answer any questions members may have about the direction in which the WI is moving in order to get away from the Jam and Jerusalem image. Did you know that in addition to our monthly meetings and twice yearly Group meetings, we receive a monthly magazine as well as having access to the WI Learning Hub where members can watch speakers or learn new skills, covering all sorts of topics?

Our members like nothing more than having a cup of tea, cake and a chat with friends, plus the bonus of an eclectic mix of speakers. Do come along and see for yourselves. We are a friendly bunch and welcome everyone who comes through the door. No competition this month, ladies!

Margaret Geary, President tel 01635 297197

Wolverton Market

The date of the next Market is **Saturday 3rd May** in the Village Hall from 9.30am until 11am. The chickens have got a spring in their step (or something similar!) so there will be lovely fresh eggs for sale. Yummy honey, locally grown vegetables and plants, and garden ornaments will also be available. Along with many stalls selling antiques, books, cards, pictures, jewellery and gifts. Coffee, tea and cake (I am reliably informed that it is someone's Birthday) are also available to purchase. Do come along and support us and we look forward to seeing you.

Wendy Morgan 01635 297538

Kingsclere Local History Association



80 years ago we thankfully saw the end of World War 2. Almost every family in Kingsclere was involved or affected in some way.

To mark this anniversary, we are holding some tours and an exhibition in early May, dates as follows:

Thurs 8th May (VE Day) 2pm - Kingsclere in WW2 Walking Tour*

Friday 9th May 2pm - Kingsclere in WW2 Walking Tour*

Saturday 10th May 2pm - Kingsclere in WW2 Walking Tour*

**Starting from outside the Methodist Chapel approx. 1 hour, ending at the War Memorial (subject to weather – if raining will not take place!).*



Sunday 11th May 10am – 4pm "Victory in Kingsclere" Exhibition, and viewing some of our Village Archives. Kingsclere Village Club, George Street.

All events are FREE, however any small donations to help cover costs are most welcome!

Gareth Martin gareth.martin24@btinternet.com

Kingsclere Twinning Association



QUIZ NIGHT

Come and join us at the **Village Club** on **Friday 16th May** from **7.30pm** for our fun and relaxed Quiz Night!

- Two Course Summer Supper
- Bar selling wine, beer and soft drinks
- Raffle for a bottle of Cormicy champagne!

All are welcome to this popular event - individuals, couples or teams of up to 8. Tickets are available at **£12** for members and **£15** for non-members. Please email kingscleretwinning@yahoo.co.uk or contact **Sue Watson** on **01635 298940** for tickets, on or before Saturday 10th May.

Kingsclere Players

Kingsclere Players will be performing 'Play On' on 6th, 7th, 13th and 14th June this year. Play On offers an hilarious glimpse behind the scenes of an amateur dramatic group and the challenges they face trying to stage a new production. The play features an increasingly frustrated director, a long suffering stage manager and mischievous sound and lighting man all trying to contend with an author constantly changing the plot and the lines. In the middle of all this, the cast strive to put on a good performance with varying degrees of success. If you've ever been involved in amateur dramatics or are curious about how it all works or just want a good laugh **Play On** is a great night out - tickets are on sale at:

www.kingsclereplayersgroup.com




Play On!
A hilarious comedy by Rick Abbot
Directed by Graham Hewitt

Performance dates:
6th/7th/13th/14th June 2025
19:30 pm

Suitable for ages 12-
At the Fieldgate Centre,
Kingsclere
Prices: Adult- £12.50 Child-£7.50

Don't miss out!
Book tickets now by scanning the QR code,
or by visiting our website!
www.kingsclereplayersgroup.com

This amateur production of "Play On!" is presented by arrangement with Concord Theatricals Ltd. on behalf of Samuel French Ltd. www.concordtheatricals.co.uk

What's on at Shipinnarts

The Ship Inn Country Hotel, Ashford Hill, RG19 8BD
Tel: **01189 814504** Website: <https://shipinnarts.org/>

Open Mics – have now moved to another venue locally.

Please email: shipinnarts@gmail.com if you want to come along and we will forward your details to Jon Whitfield who runs these evenings, all welcome.

Saturday 3rd & 17th May Flautissimo II Contact Alison Pickering, email: alisonjpickering30@gmail.com

Friday 9th & 16th May Recorder Choir (18 years and up) – come and join us! Bring your recorder if you have one, Alison has some to lend if not. Please bring £5 cash each practise. Contact Alison Pickering, email: alisonjpickering30@gmail.com

If you would like to be on our mailing list please email us at the shipinnarts address above, we have events coming up in July, August and September here at Shipinnarts.



The Church Pages



“WHAT IS TRUTH?”

A friend posted this on Facebook at the start of last month,
“April the first – the one day when everyone checks the source of a story before believing and/or sharing it. Make sure you do the same thing for the rest of the year.”

And then my attention was drawn to an interview with the actor, Denzel Washington, from 2016 in which he said, *“If you don't read the newspaper you're uninformed, if you do read it, you're misinformed... What is the long-term effect of too much information? One of the effects is the need to be first, not even to be true anymore.”* He then addresses the assembled media and says *“So what a responsibility you all have, to tell the truth, not just to be first, but to tell the truth. We live in a society now where it's just first, who cares, get it out there, we don't care who it hurts, we don't care who we destroy. We don't care if it's true – just say it, sell it! Anything you practice you'll get good at...”*

The juxtaposition of those two phrases, “What is truth?” and “Anything you practice you'll get good at...” found a resonance with me on two levels...

The first is the ways in which news is reported globally – it does seem increasingly to be a race to publish first and check the facts second. I am sure we can all point to people whose lives have been devastated by that attitude and where there may have been an apology in the fourth column of page 12, or as a final item on the radio or television news, unless those who have been wronged have sufficient wealth to take the media company to court to seek redress. The realm of “social” media is far less regulated and the turnaround far quicker... It is a global issue, which has far-reaching consequences.

The second example comes from the fact that we are now between Easter and Pentecost... what is the truth that we are to share in our lives, in our speaking, in our praying, in every aspect of our being human?

Do we have the same urgency to share this life-changing, life-affirming news with the same speed and enthusiasm as the first disciples? How should we go about it in each of our individual circumstances? If we do not believe the resurrection and all that follows from that to be true, then on what is our faith based? If we do believe, then there is an urgency to tell the story far and wide for so many reasons.

So, let's encourage each other to tell the truth of our risen Saviour! Good news that has been shared with transformational results over many centuries and is still as life-affirming today!! Happy Easter!

Peace,

Rachel

**Rev Rachel Borgars
Methodist Minister**

St Mary's Church

Worship in our Churches

May 2025



Thurs 1st	10.30am Traditional Morning Worship	St Mary's, Kingsclere
Sun 4th	9.00am Traditional Morning Worship 9.30am BCP Holy Communion 10.30am Contemporary Morning Worship	St Mary's, Kingsclere St Peter's Headley St Mary's Kingsclere
Thur 8th	10.30 am Traditional Holy Communion	St Mary's, Kingsclere
Sun 11th	9.00am Traditional Morning Worship 9.30am Traditional Morning Worship 9.30am Bubble Church 10.30am Contemporary Morning Worship	St Mary's, Kingsclere St Peter's Headley St Paul's Ashford Hill St Mary's Kingsclere
Thur 15th	10.30am Traditional Morning Worship	St Mary's, Kingsclere
Sun 18th	9am Traditional Holy Communion 9.30am Traditional Morning Worship 10.30am Contemporary Holy Communion	St Mary's, Kingsclere St Paul's Ashford Hill St Mary's, Kingsclere
Thur 22nd	10.30am Traditional Morning Worship	St Mary's, Kingsclere
Sun 25th	9.00am Traditional Morning Worship 9.30am Traditional Holy Communion 10.30am Contemporary Morning Worship	St Mary's, Kingsclere St Paul's Ashford Hill St Mary's Kingsclere
Thur 29th	10.30am Ascension Day Holy Communion	St Mary's, Kingsclere
	www.clerewoodlands.org.uk	

Lighting up St Mary's

The sight of St Mary's Church when it is floodlit is truly beautiful. Many people sponsor these lights (£15 per evening) to celebrate an occasion, such as a birthday, wedding, anniversary, christening, or some other special day in their lives. To book, please email administrator@stmaryskingsclere.co.uk or call 01635 299528. To include your tribute in the Tower, please let us have your words before the 12th of the preceding month.



May

- 4th Loving memories of Moira on her birthday.
- 31st Remembering Hazel Soper, a dear Mum, Grandma and Great Grandma on her birthday.

Kingsclere Methodist Church

Services for May 2025

- Sun 6th** Mrs Alyson Read
- Sun 11th** Rev Rachel Borgars
- Sun 18th** Mr Peter Franks
- Sun 25th** Mrs Rosie Greenhalgh

All services begin at 10am unless otherwise stated

Coffee Morning every Thursday 10.30 until 12noon, all very welcome.
Hall available for hire (see Directory on Page 24)
Christine Westcombe email c_westcombe@hotmail.com

Saturday Coffee in the Kingsmill Room, St Mary's Church

Fresh brewed coffee, tea and delicious home-made cakes.

May 3rd, 10th, 24th and 31st 10.00-12.00

If you're looking for great company,
we'd love you to join us for a cuppa and a natter!

For more info, please contact the church office on: **01635 299528**



St Mary's Kingsclere

Hooray – the **Village Fete** is happening again this year!

Bank Holiday Monday

25th August

12 noon – 4pm

St Mary's Church and churchyard

Barbecue - Stalls – Dog show – Live music – Bric-a-brac
Tombola – Refreshments – Books – Village Pub and more

To volunteer email administrator@stmaryskingsclere.co.uk
Hold on to your donations – details of how to drop off to follow

Friends of St Mary's Kingsclere Ltd (FOSM)

The recent prolonged spell of sunny weather has brought on young plants, and we are looking forward to our Plant Sale in St Mary's Churchyard on Saturday 31st May, opening at 9.30am. Come early, come often!

If any of you have plants you could contribute, particularly perennials you are splitting, they would still be much appreciated. Please contact either Jane Royle on 01635 297430 / jane.b.royle@gmail.com. or Sarah Mussett on 07586 801884 / sarah.mussett@hotmail.co.uk.

Our Cornish Staycation will be from 12 - 3 on Saturday 15th November at the Fieldgate Centre. Look forward to Cornish fare, and lusty singing from a Sea Shanty Group.

Peter Turner, Chairman

Website: friendsofstmmaryskingsclere.org. For membership & (FOSM) enquiries contact fosmkingsclere@gmail.com

FOSM 200 Club

The winner of the April Draw was Ruth Richardson – No. 88
Congratulations, Ruth

Next month's Draw will take place at Bel & the Dragon at about 7pm on
Tuesday 6th May

Kingsclere Royal British Legion



The Branch would like to thank everyone who helped organise and support the presentation at the Fieldgate Centre from Lt General James Bashall, CB, CBE in aid of the RBL, with special thanks to Mrs. Janine Westropp. A total just under £1,000 was raised of which we are grateful to all those who donated as well as those who gifted raffle prizes.

The Branch is in the process of arranging an activity as part of the VE Day 80th Anniversary celebrations on the 8th of May and to collaborate with other community organisations that weekend where possible. Please look out for further detail on social media, local notice boards etc. in the lead up to 8th May.

We meet on the first Tuesday of the month from 7pm at the Kingsmill Room, St Mary's Church. Anyone wishing to become a member or to see what the RBL is all about is welcome to join us.

Jason Hart

Kingsclere Branch Chairman & Kingsclere Poppy Appeal Organiser

Email: kingsclere.chairman@rbl.community

Kingsclere Gardening Association



The Spring Show at the Village Club on 6th April had 125 entries which was very pleasing, considering the weather which gave us concern that bulbs would not be flowering in time for the show, but nature gave us the warmth that compensated. Quite a few people entered the 'have-a-go' classes, which could be entered on the day.

In our **August Show**, there are a few classes that any Kingsclere resident can 'have a go' at on the day.

A container of mixed vegetables	A dish of vegetables
A vase of flowers from my garden	A dish of fruit
A single stem of flowers	A pot plant

We also have cookery and handicraft classes to try. Further details will be available closer to the day.

May and June we do not meet for speakers, but we are planning garden visits for members only, and a social evening which will be a meal. Members will be notified of the details for these events.

Denise Allen Chairman 01635297966 denise.allen47@icloud.com

New members always welcome, we can also be found on Facebook

Sandham Memorial Chapel

Burghclere Newbury RG20 9JT /// shippers.canyons.racked

Welcoming visitors on Thursday, Friday, Saturday, Sunday and Bank Holiday Mondays between 11am -3pm

Open Studios – May 10th – 26th May



View South from Coombe Gibbet
painting by Chris Page

We are privileged to host the local artist Chris Pagewho will be showing his latest work in our Exhibition Space. Pieces will include his collection of drawings and paintings.

The exhibition is part of West Berkshire and North Hants Open Studios events from May 10th until 26th May between 11am and 3pm on Thursday, Friday, Saturday, Sunday, and Bank Holiday Monday. The exhibition is included in the normal entrance fee.

Instagram: @ntsandham



KINGSCLERE VILLAGE CLUB

Est. 1921 CHARITY 1189234

<http://www.kingsclerevillageclub.co.uk>

<https://www.facebook.com/kingsclerevillageclub>

Victory in Europe



Kingsclere Local History Association and Kingsclere Village Club are holding an exhibition to commemorate the ending of WW2 in Europe. **Sunday 11th May, 10am to 4pm.** Featuring items of local interest as well as the broader picture of the times. A selection of the local archives will also be open. Followed by a ...

Victory Tea Party

Sunday 11th May, at 4pm. All welcome but please contact Helen (below) to reserve your place. £5/person. Let us know if you require a vegetarian/vegan option or have any other dietary requirements.

Yoga

At the time of writing, we have some spaces in two of our yoga classes.

Tuesday evenings 7.30 to 9pm. Iyengar Yoga, focussing on poses to develop strength, mobility and stability. **Wednesday mornings 10-11am,** focussing on breathing techniques to help relaxation and postures to improve core strength and ease aches. Techniques you can take home to use every day.

Contact Emma on bookings@kingsclerevillageclub.co.uk for more information.

Community Café

This month's Café is on **Saturday 17th, 10am to 12.30pm**, Enjoy a cuppa and a homemade cake in a friendly atmosphere. Fun quiz at 11am. All welcome.

Shakespeare in the Garden

The Festival Players, return to Kingsclere Village Club with their latest production, **As You Like It**, probably Shakespeare's most entrancing romantic comedy. **Friday 20th June, 7.30pm.** Tickets £15 performance only, £22.50 performance + picnic. Tickets from <https://wegottickets.com/event/651267> or from Helen (below). This is always a very popular event, so make sure you book your tickets in good time!

Helen 01635 297390 or events@kingsclerevillageclub.co.uk

Kingsclere Village Bunnies Baby & Toddler Group

Where: The Village Club, George St

When: Tuesdays, 9:00am – 11:00am

Cost: £2.50 for 1st child (including snack for child and hot drink and biscuit for adult), 50p per extra child, £1 per extra adult



The Bunnies really enjoyed celebrating Easter last month, especially with our very own big bunny who delivered some tasty treats! This month, we look forward to hopping around the outdoor play area as much as possible now that spring has truly sprung.

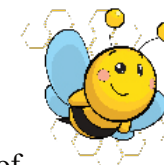
The library will be back opening especially for the Bunnies on the first Tuesday of the month (6th May).

Bunnies will be closed on Tuesday 20th May

Thank you as always to Swan Street Stores for their continued support of a weekly donation of fresh fruit snacks for the Bunnies. For information visit our Facebook page, or regular visitors can join our WhatsApp group for weekly updates.

Lydia Harley-Tomlinson lydia.harleytomlinson@gmail.com

Kingsclere Pre-School



This month at Kingsclere pre-school, we have been doing lots of Easter crafts. The children have been on Easter egg hunts and have been using different materials to create Easter pictures, cards and crafts. We also celebrated Mother's day, creating cards for our loved ones and the children enjoyed doing some cooking to make delicious treats for the Mums/ Nans/Aunties in their lives.

We are doing lots of fundraising over the Easter break with a Hopathon, Easter egg hunt and various stalls. The children have also been encouraged to take part in a sponsored Easter reading challenge.

Over the next month, we are going to be exploring Spring and getting stuck into some gardening to, hopefully, make our outdoor space nice and bright with lots of flowers for the bees and butterflies!

As always, thank you to all of our families for your continued support and the staff for their hard work. If you are looking for a childcare space, or ways you can support the Preschool, please contact admin@kingsclerepreschool.co.uk or visit our website www.kingsclerepreschool.co.uk.

Kingsclere CE Primary School



We had a vibrant end to the Spring Term at Kingsclere CE Primary School, packed with music, achievement, science, and environmental action.

Easter Cantata at St. Mary's Church

The term ended on a high with a whole-school visit to St. Mary's Church, where pupils performed an Easter Cantata for families and community members. The children sang with joy, and thoughtful readings beautifully told the Easter story. We also enjoyed the exciting debut of our new Samba band, whose rhythms kicked off the celebrations in style.

Science Competition

Our talented Year 5 scientists took part in a science competition against other local schools and won first place! Their enthusiasm and problem-solving skills stood out as they tackled a series of science challenges. This follows a glowing review of our science teaching by the Hampshire Inspection and Advisory Service. Some of our children have even been invited to write about their science experiences for a Hampshire Education magazine as a result of the great science learning taking place.

Cross Country Success

Sixty pupils from Years 3 to 6 proudly represented Kingsclere at the cross-country event at Newbury Showground, joining 1,600 children from 60 schools. Special congratulations to Euan (20th), Harrison (24th), and Flo (40th) for their strong finishes! Many other children also made great personal progress compared to last year. Well done to all our runners!

Planting a Mini Orchard

Our recent Grounds Day brought the curriculum to life with hands-on Science, Art, and Geography activities. A key highlight was planting a new mini orchard on our school field, thanks to grant funding secured by Laura from our fantastic FKS PTA. With help from caretaker Mr. Derbyshire, the children planted the trees and celebrated with a joyful whole-school performance of *Let It Grow* - a wonderful moment of teamwork and care for nature.



We're proud to be a school where community, creativity and curiosity thrive. We look forward to a fun-filled Summer Term ahead with plenty more learning and enrichment to come!

Jo Messenger, Headteacher



KINGSCLERE CE PRIMARY SCHOOL SWIMMING LESSONS

Cali Kids Swimming will be back and hosting fun after-school swimming lessons running **2nd June until 18th July**.

Lessons will be conducted Monday to Friday, 3:30 to 6pm with qualified and experienced teachers.

Lessons will cost £13 per lesson, per child, or £10 per lesson per child if booking multiple days within the week.

Lessons can be booked by emailing: **calikidsswimming@gmail.com**

**** There are limited places, so book your place now! ****

Kingsclere Community Library



HOURS	Tuesday & Thursday	1.00pm - 5.30pm
	Saturday	10.00am - 1.00pm

Kingsclere Community Library would like to thank Councillor David Conquest for choosing us to be the recipients of his £500 Councillor Grant from Basingstoke and Deane Borough Council. We are extremely grateful and have used the money to purchase new books which are now in the library.

Kingsclere Community Library is delighted to host The Newbury Dramatic Society's presentation of "Bletchley: Behind the Gates" which is a unique show with original sketches and songs performed in the war years by the Bletchley Park Drama Group. This will take place in the Library on **Monday 12th May at 7.30**. Tickets £8 (to include a glass of wine or soft drink) available from the library and on Evenbrite. We think this will be a popular event, so if you are interested, don't delay, get your ticket now!

May 12th is "National Limerick Day" so to celebrate this we are running a **limerick competition for the whole of May!!** There will be three categories of entries 10 and under, 18 and under, and adult. The entries will be independently judged and prizes will be given! So come on, get creating! Limericks should be in the usual 5-line format and should have a book/library/literary theme. **Entries must be received by Saturday 31st May** and can be dropped off at the library or sent to **lucinda.thursfield@outlook.com**. Please make sure to put your name and contact details on your entry. Further details can be obtained in the library or on our Facebook page.

Nicki Lee, kingsclerelibrary@gmail.com www.kingsclerelibrary.co.uk
Library phone number: 01635 297464

Kingsclere Youth Club

Where: The Fieldgate Centre
 When: Mondays 5.30pm - 7.30pm
 Entry fee: £3.50 First session is free



Youth Club took a bit of a break during April for the Easter holidays. We do hope to squeeze in a bit of chocolaty-cherry flavoured baking before the end of the month.

Our young people are very talented performers and most weeks we are treated to gymnastics and/or dance performances, or we just have a good run around playing tag.

In May, we are looking forward to playing outside sports and games with some new equipment.

Youth Club welcomes **all** young people aged between 7- and 14-years-old. We host a broad range of activities including craft, sports, cooking and games. Come along to try it out - the first session is free.

Lydia Harley-Tomlinson lydia.harleytomlinson@gmail.com



Citizens Advice Basingstoke is an independent charity providing free, confidential and impartial advice. Call **Adviceline** free on **0808 278 7829**, Monday to Friday, 9-4pm. We are here to help.

Getting repairs done if you're renting privately

Your landlord is responsible for most major repairs in your home. Write to them as soon as you notice a problem, as you could be held responsible if it gets worse. Keep a copy yourself.

If a letting agent manages the property for your landlord, write to them and they should talk to your landlord. The letting agent will be responsible for making sure your landlord does the repairs.

www.citizensadvice.org.uk/housing/repairs-and-housing

Struggling to pay your monthly mortgage payments

If you've already missed mortgage payments you must act quickly to stop yourself from falling into debt. If your lender thinks you're not dealing with your debt, they'll take action through the courts and this could lead to you losing your home.

www.citizensadvice.org.uk/debt-and-money/mortgage-problems

Talking about money

1 in 5 young people who come to us have a debt problem. Budget planners can help you understand what you're earning and spending, and where you might be able to cut costs. You can use the free planner on

www.moneyhelper.org.uk/en/everyday-money/budgeting/budget-planner

Nature Notes

This month we have been away in the Wye Valley, staying in a cottage nestled high up on the hillside, with a wonderful view of the river bending below. I suspect we were some of the first visitors of the season, as at dusk on our first night's stay, I caught sight of five red deer grazing on the steeply terraced garden. They looked very big, (they are Britain's largest land mammal) and were still in their shaggier, brown winter coats, before they turn redder for the summer. As woodland red deer are usually solitary, I presume they were one or two hinds with their older calves. Two looked warily back at us, in a group at the window, frozen still and grinning, but did not hurry off, and the next time we looked, they had disappeared.

One of our holiday tourism stops was the Butterfly Zoo. Our daughter shrieked with delight as she marched through the plastic flapped doorway straight into the swirling dance of enormous Blue Morpho butterflies (*Morpho peleides*), one of the largest butterflies in the world, with wings spanning from five to eight inches. The heat of the greenhouses drove us out before we wanted to leave, but we had time to spot a row of tiny caterpillar eggs, strung along the midrib of a leaf like a row of pixie's pearls, and the incredible huge swallowtail, the Scarlet Mormon (*Papilio rumanzovia*), whose legs were long and gangly like a Daddy Longlegs.

On a boat ride down the river, our guide told us of the largest salmon ever caught in the Wye weighing in at 23kg – we could imagine this vividly as our Dalmatian Daisy weighs the same amount (though only 21kg if the vet asks). I tried to explain this comparison to our 3-year-old, but she simply asked, 'Where the Daisy fish was?'.

We were lucky enough to spot a kingfisher sweeping down the river, and two pairs of Mandarin ducks weaving in and out of willow branches. I hadn't seen a female Mandarin before, so it was interesting to see its patterns mimicking the males' but in brown and grey tones, as opposed to the males' amazing rainbow colours. Mandarin ducks are unusual as they nest in trees. The mother must coax the ducklings to jump out of the nest, sometimes quite high up the tree, to jump into the water for the first time.



kingfisher

Lydia Harley-Tomlinson

lydia.harleytomlinson@gmail.com

May in the Garden

This is a wonderful time in the garden. May brings lots of colour after the yellow of the daffodils. Trees are in full leaf and many have blossom, a good background for tulips, early clematis, camassia, foxgloves, alliums, aquilegias, oriental poppies and many more flowering plants. Despite the warmer weather, night frost can still be possible, so keeping a look at the weather forecast is essential. Sadly, bedding plants will be lost if they are not protected from the frost.

Warmer weather brings pests and diseases, if possible try to use non-chemical treatment. Recently a beekeeper informed the K.G.A. Group at one of their meetings that after each bank holiday he has bee losses from chemical usage in gardens. A little concerning, as we have a noticeable decline of bees and pollinating insects. One of the most annoying bugs is the vine weevil. The grub eats at the plant roots, particularly in pots and tubs. Try to keep the pots, etc. well watered as this is a deterrent.

Now is the time to plant hanging baskets, tubs, and troughs with summer bedding plants. They take a couple of weeks to get established and may need night protection for a while. The baskets can remain sat on top of a bucket for a while until there has been some growth. Also plant out bedding plants when safe to do so.

Vegetable seeds can be sown in the ground, placing them where they are required to grow. This applies to root crops in particular. Tomato plants can go into the garden, also marrow and courgette plants, and, if you have the space, sweetcorn. Pinch out the tops of broad beans to discourage blackfly. If you are growing carrots, make a barrier around them, if possible, to stop carrot root fly from attacking them. Growing onions, close by will help as this masks the carrot smell and confuses the carrot fly.

Prune raspberries, protect strawberries with straw or strawberry mats to prevent rain and slug damage. Prune winter and spring flowering shrubs to keep them to a manageable size, tie in climbers, e.g. clematis, and support tall growing perennials. Many perennials in the garden may be given "The Chelsea Chop". This prevents the plants from growing too tall, it will delay flowering by a couple of weeks, but the garden will look a lot tidier by late summer and the autumn. I cut down by half michaelmas daisies and sedums.

The lawns will need to be cut often at this time of the year, the blades on the mower can be loaded now that the weather is dryer. Ponds will need attention as the warmer weather encourages weed, and if you were fortunate enough to have had frogspawn, hopefully it will have survived the birds.

Happy gardening!

Denise Allen



Kingsclere Performing Arts College

The Kings PA Summer Showcase A Night to Remember!

Did you know Kingsclere Performing Arts College is in its eighth year of providing pre-professional training for students aged 16+, right in the heart of the village? As we begin the summer term, alongside preparations for OCR Level 3 end of year exams, our students will be heading straight into rehearsals for the highlight of the Kings PA Calendar – our Annual Summer Showcase at the Haymarket!

The standard at Kings is so high that you might forget that you are not watching professional performers! This spectacular event is suitable for the whole family, and brings together the talents of our Musical Theatre, Dance and Acting students in one unforgettable variety performance. Supporting these productions is a fantastic way to enjoy local, quality theatre and invest in the future of performing arts education.

Thursday 26th June at 7:30pm

Friday 27th June at 12:00pm – FREE Schools' Matinee!

Friday 27th June at 7:30pm

The Haymarket, Basingstoke

Tickets available at: anvilarts.org.uk

(School groups can book via info@kings-pa.co.uk. General public tickets also available.)



"KISS ME GOODNIGHT, SERGEANT MAJOR"



D-Day was the Allied Invasion which led
to Victory in World War Two

Running up Sword Beach with his Sten gun was
Sgt George Harris who was mentioned in
dispatches twice for bravery on the Longest Day.



Now his proud son Tony - one of our favourite speakers - tells this story and other anecdotes from his Dad's 23 year military career.

With artefacts and personal possessions, Tony will appear as a Sgt Major asking us all to stand by your beds and kiss me goodnight!

Wednesday 21st May, 10am St Mary's Hall, Overton

THE KINGSCLERE TOWER DIRECTORY

POLICE, FIRE or AMBULANCE

Police Enquiries/Information

Emergency 999

nonEmergency 101

Kingsclere Health Centre:

03330341033

North Hampshire Hospital, Basingstoke

01256 473202

Parish Council: 37 George Street (see page 2)

01635298634

Kingsclere Charities Clerk: Gillian Hem

07884182696

kingsclerecharities4@mail.com

Dial-a-Ride

01256 462101

CHURCH CONTACTS

St. MARY'S CHURCH:

Vicar Peter Williams vicar@stmaryskingsclere.co.uk

Church Warden:

John Price johnsaprice@hotmail.com

01635297780

Administrator:

administrator@stmaryskingsclere.co.uk

01635 299528

07422 687125

METHODIST CHURCH:

Minister: Rev Rachel Borgars

07889 905753

Rachel.Borgars@methodist.org.uk

01256 895878

Secretary & Hire of Hall Jeanette Billington

01635 297585

ROMAN CATHOLIC:

Rev Patrick Tansey

0118 9814572

tadley@portsmouthdiocese.org.uk

Bas & Deane

01256 844844

Swan Street P O

01635297035

Buses

0345 8101000

Kingsclere Vets

01635896330

Trains

0845 748 4950

Dentist

01635299981

Gas Emerg.

0800 111999

Age Concern Local Agent

08003287154

Chemist

01635 298419

Berkshire Vets

01635896333

Kingsclere Library

01635297464

BOROUGH COUNCILLORS

David Conquest 07887 871105

Cllr. David. Conquest@basingstoke.gov.uk

Mike Bound 07833 612735

Cllr. Mike. Bound@basingstoke.gov.uk

Kerry Morrow 07725 819021

Cllr. Kerry. Morrow@basingstoke.gov.uk

COUNTY COUNCILLOR

Tom Thacker 07712695468

tom.thacker@hants.gov.uk

MP for N.W. Hampshire:

Kit Malthouse 01264401401

kit.malthouse.mp@parliament.uk

2, Church Close, Andover, SP10 1DP

There is a more comprehensive list of local contact numbers on the
Parish Council website. Go to www.kingsclere-pc.org.uk/directory